

DGAT1 antibody

Cat. No. GTX48577

Host	Rabbit
Clonality	Polyclonal
Isotype	IgG
Applications	WB, ICC/IF
Reactivity	Human, Mouse, Rat, Zebrafish, Goat, Sheep, Bovine, Primate

[References \(2 \)](#)

[Package](#)

50 µl

Applications

Application Note

*Optimal dilutions/concentrations should be determined by the researcher.

Suggested dilution	Recommended dilution
WB	2 µg/ml
ICC/IF	1:40 - 1:100

Not tested in other applications.

Calculated MW 55 kDa. ([Note](#))

Properties

Form	Liquid
Buffer	PBS
Preservative	0.05% Sodium azide
Storage	Store as concentrated solution. Centrifuge briefly prior to opening vial. For short-term storage (1-2 weeks), store at 4°C. For long-term storage, aliquot and store at -20°C or below. Avoid multiple freeze-thaw cycles.
Concentration	1 mg/ml (Please refer to the vial label for the specific concentration.)
Immunogen	A synthetic peptide made to an internal region (within residues 200-300) of human DGAT1. [Swiss-Prot# O75907]
Purification	Purified by antigen-affinity chromatography
Conjugation	Unconjugated

Note

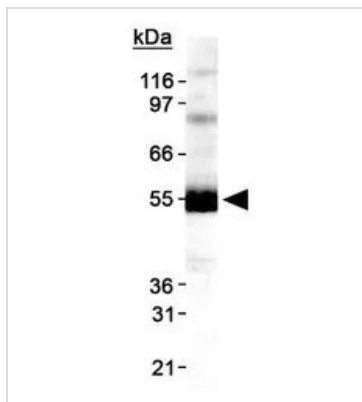
For laboratory research use only. Not for any clinical, therapeutic, or diagnostic use in humans or animals. Not for animal or human consumption.

Purchasers shall not, and agree not to enable third parties to, analyze, copy, reverse engineer or otherwise attempt to determine the structure or sequence of the product.



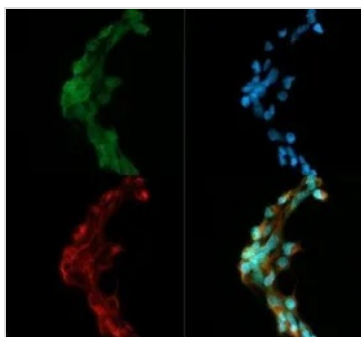
For full product information, images and publications, please visit our [website](#).

DATA IMAGES



GTX48577 WB Image

WB analysis of HepG2 cell lysate using GTX48577 DGAT1 antibody.



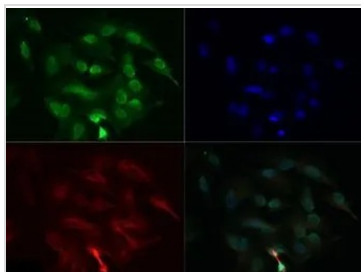
GTX48577 ICC/IF Image

ICC/IF analysis of HEK293 cells using GTX48577 DGAT1 antibody.

Green : primary antibody

Red : Tubulin

Blue : DAPI



GTX48577 ICC/IF Image

ICC/IF analysis of HepG2 cells using GTX48577 DGAT1 antibody.

Green : primary antibody

Red : Tubulin

Blue : DAPI

Dilution : 1:100



For full product information, images and publications, please visit our [website](https://www.genetex.com).