

ATG5 antibody

Cat. No. GTX48583

Host	Rabbit
Clonality	Polyclonal
Isotype	IgG
Applications	WB, ICC/IF, IHC-P, FCM, IP, PLA
Reactivity	Human, Mouse, Rat, Zebrafish, Bovine, Pig, Xenopus, Primate

References (2)

Package

50 µl

Applications

Application Note

*Optimal dilutions/concentrations should be determined by the researcher.

Suggested dilution	Recommended dilution
WB	1:500
ICC/IF	1:250
IHC-P	1:400
FCM	Assay dependent
IP	1:10 - 1:500
PLA	Assay dependent

Not tested in other applications.

Calculated MW 32 kDa. ([Note](#))**Product Note** This is selective for the full-length and calpain cleaved isoform proteins. The short isoform is missing amino acids 1-79. The calpain cleaved form of ATG5 is missing amino acids 195-275.

Properties

Form	Liquid
Buffer	PBS
Preservative	0.02% Sodium azide
Storage	Store as concentrated solution. Centrifuge briefly prior to opening vial. For short-term storage (1-2 weeks), store at 4°C. For long-term storage, aliquot and store at -20°C or below. Avoid multiple freeze-thaw cycles.
Concentration	Batch dependent (Please refer to the vial label for the specific concentration.)
Immunogen	A synthetic peptide made to an N-terminal region of the human ATG5 protein (within residues 1-50) [Swiss-Prot Q9H1Y0]
Purification	Purified by antigen-affinity chromatography

For full product information, images and publications, please visit our [website](#).

Conjugation

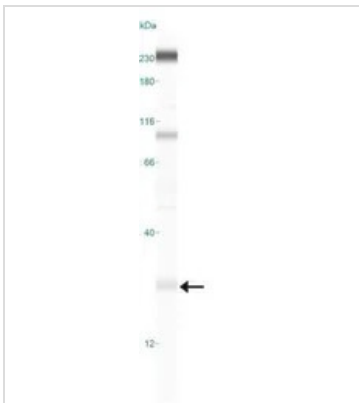
Unconjugated

Note

For laboratory research use only. Not for any clinical, therapeutic, or diagnostic use in humans or animals. Not for animal or human consumption.

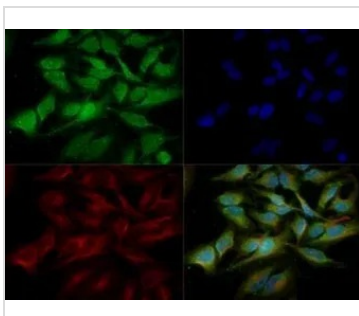
Purchasers shall not, and agree not to enable third parties to, analyze, copy, reverse engineer or otherwise attempt to determine the structure or sequence of the product.

DATA IMAGES



GTx48583 WB Image

WB analysis of HeLa cell lysate using GTx48583 ATG5 antibody.



GTx48583 ICC/IF Image

ICC/IF analysis of HeLa cells using GTx48583 ATG5 antibody.

Green : primary antibody

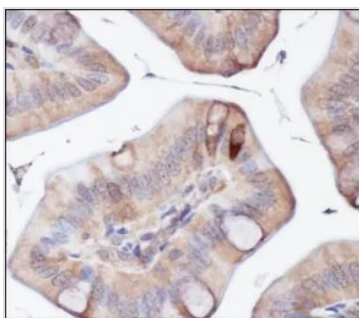
Red : Tubulin

Blue : DAPI

Dilution : 1:200

Fixation : 10% formalin

Permibilization : 0.5% Triton-X100



GTx48583 IHC-P Image

IHC-P analysis of mouse intestine tissue using GTx48583 ATG5 antibody.



For full product information, images and publications, please visit our [website](#).