

TDP43 antibody

Cat. No. GTX48590

Host	Rabbit
Clonality	Polyclonal
Isotype	IgG
Applications	WB, ICC/IF, IHC-P
Reactivity	Human, Mouse, Zebrafish, Chicken, Xenopus, Primate

Package
50 µl

Applications

Application Note

*Optimal dilutions/concentrations should be determined by the researcher.

Suggested dilution	Recommended dilution
WB	0.5 - 2 µg/ml
ICC/IF	1:100 - 1:1000
IHC-P	1:250

Not tested in other applications.

Calculated MW 45 kDa. ([Note](#))

Properties

Form	Liquid
Buffer	Tris-Glycine, 150mM NaCl
Preservative	0.05% Sodium azide
Storage	Store as concentrated solution. Centrifuge briefly prior to opening vial. Store at 4°C. DO NOT FREEZE.
Concentration	1 mg/ml (Please refer to the vial label for the specific concentration.)
Immunogen	A synthetic peptide to a C-terminal region [within residues 350-414] of the human TARDBP protein. [Swiss-Prot# Q13148]
Purification	Purified by antigen-affinity chromatography
Conjugation	Unconjugated

Note

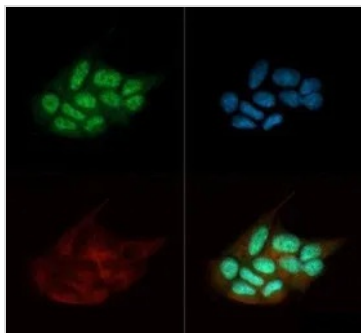
For laboratory research use only. Not for any clinical, therapeutic, or diagnostic use in humans or animals. Not for animal or human consumption.

Purchasers shall not, and agree not to enable third parties to, analyze, copy, reverse engineer or otherwise attempt to determine the structure or sequence of the product.



For full product information, images and publications, please visit our [website](#).

DATA IMAGES

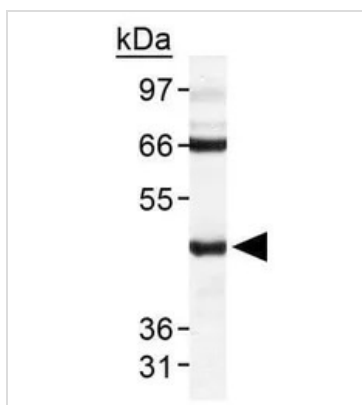
**GTX48590 ICC/IF Image**

ICC/IF analysis of MCF-7 cells using GTX48590 TDP43 antibody.

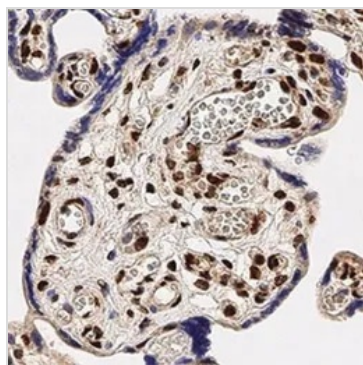
Green : primary antibody

Red : Tubulin

Blue : DAPI

**GTX48590 WB Image**

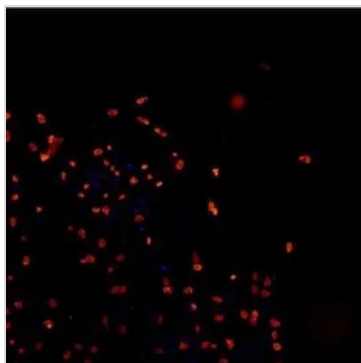
WB analysis of HeLa cell lysate using GTX48590 TDP43 antibody.

**GTX48590 IHC-P Image**

IHC-P analysis of human placenta tissue using GTX48590 TDP43 antibody.

Dilution : 1:250

Antigen retrieval : Heat induced antigen retrieval (HIER) using 10mM sodium citrate buffer (pH 6.0)

**GTX48590 ICC/IF Image**

ICC/IF analysis of human iPS derived neuron cells using GTX48590 TDP43 antibody.

Red : primary antibody

Blue : DAPI

Dilution : 1:200

Permibilization : 0.3% Triton X-100

Fixation : 4% PFA



For full product information, images and publications, please visit our [website](#).