

TDP43 antibody (DyLight 550)

Cat. No. GTX48595

Host	Rabbit
Clonality	Polyclonal
Isotype	IgG
Applications	WB, ICC/IF, IHC
Reactivity	Human, Mouse, Zebrafish, Chicken, Xenopus, Primate

Package

50 µl

Applications

Application Note

*Optimal dilutions/concentrations should be determined by the researcher.

Suggested dilution	Recommended dilution
WB	Assay dependent
ICC/IF	Assay dependent
IHC	Assay dependent

Not tested in other applications.

Calculated MW 45 kDa. ([Note](#))

Properties

Form	Liquid
Buffer	50mM Sodium Borate
Preservative	0.05% Sodium azide
Storage	Store as concentrated solution. Centrifuge briefly prior to opening vial. Store at 4°C. Protect from light.
Concentration	Batch dependent (Please refer to the vial label for the specific concentration.)
Immunogen	A synthetic peptide to a C-terminal region [within residues 350-414] of the human TARDBP protein. [Swiss-Prot# Q13148]
Purification	Purified by antigen-affinity chromatography
Conjugation	DyLight550 Wavelength

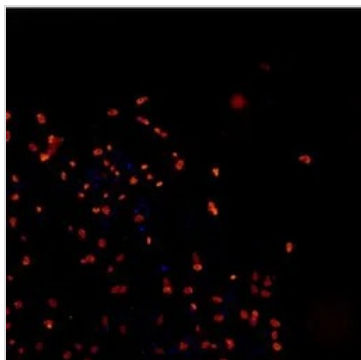
Note

For laboratory research use only. Not for any clinical, therapeutic, or diagnostic use in humans or animals. Not for animal or human consumption.

Purchasers shall not, and agree not to enable third parties to, analyze, copy, reverse engineer or otherwise attempt to determine the structure or sequence of the product.



For full product information, images and publications, please visit our [website](#).

DATA IMAGES

GTX48595 ICC/IF Image

ICC/IF analysis of human iPS derived neuron cells using GTX48595 TDP43 antibody (DyLight 550).

Red : primary antibody

Blue : DAPI

Dilution : 1:200

Permibilization : 0.3% Triton X-100

Fixation : 4% PFA



For full product information, images and publications, please visit our [website](#).