

SIAH1/2 antibody [8G7H12]

Cat. No. GTX48599

Host	Mouse
Clonality	Monoclonal
Isotype	IgG1
Applications	WB, IP
Reactivity	Human, Rat, Zebrafish, Drosophila, Pig

Package
100 µl

Applications

Application Note

*Optimal dilutions/concentrations should be determined by the researcher.

Suggested dilution	Recommended dilution
WB	1:500
IP	1:10 - 1:500

Not tested in other applications.

Product Note

This is specific for human SIAH 1 and 2 and Drosophila SINA in proliferating cells and stem cells. This does not detect Drosophila SIAH or normal, nondividing cells.
We do not recommend use of this product for Mouse samples.

Properties

Form	Liquid
Buffer	Tissue culture supernatant
Preservative	0.1% Sodium azide
Storage	Store as concentrated solution. Centrifuge briefly prior to opening vial. Store at 4°C. DO NOT FREEZE.
Immunogen	Synthetic peptide made to a C-terminal portion of the drosophila SINA protein (within residues 280-331). [Swiss-Prot# P21461]
Purification	Unpurified
Conjugation	Unconjugated

Note

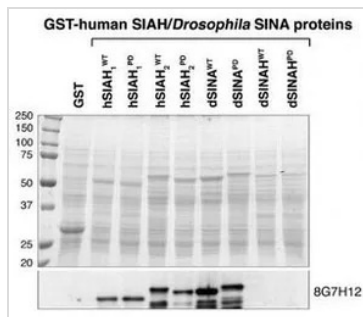
For laboratory research use only. Not for any clinical, therapeutic, or diagnostic use in humans or animals. Not for animal or human consumption.

Purchasers shall not, and agree not to enable third parties to, analyze, copy, reverse engineer or otherwise attempt to determine the structure or sequence of the product.



For full product information, images and publications, please visit our [website](#).

DATA IMAGES



GTX48599 WB Image

WB analysis of drosophila and human SIAH1/2 recombinant protein using GTX48599 SIAH1/2 antibody [8G7H12].



For full product information, images and publications, please visit our [website](#).