

MAT1A + MAT2A antibody

Cat. No. GTX48600

Host	Rabbit
Clonality	Polyclonal
Isotype	IgG
Application	WB
Reactivity	Human, Rat, Zebrafish, Bovine, Primate

Package

50 µl

APPLICATION

Application Note

*Optimal dilutions/concentrations should be determined by the researcher.

Suggested dilution	Recommended dilution
WB	2 µg/ml

Not tested in other applications.

Product Note We do not recommend use of this product for Mouse samples.

PROPERTIES

Form	Liquid
Buffer	PBS, 30% Glycerol
Preservative	0.1% Sodium azide
Storage	Store as concentrated solution. Centrifuge briefly prior to opening vial. For short-term storage (1-2 weeks), store at 4°C. For long-term storage, aliquot and store at -20°C or below. Avoid multiple freeze-thaw cycles.
Concentration	1 mg/ml (Please refer to the vial label for the specific concentration.)
Immunogen	Synthetic peptide made to an internal portion of the human MAT2A protein (within residues 100-200). [Swiss-Prot# P31153]
Purification	Purified by antigen-affinity chromatography
Conjugation	Unconjugated

Note

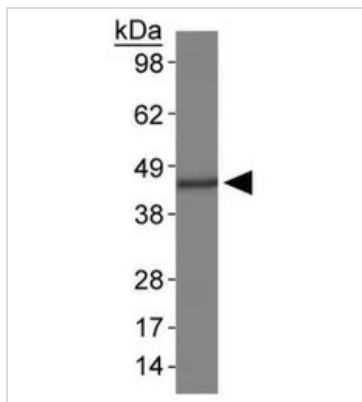
For laboratory research use only. Not for any clinical, therapeutic, or diagnostic use in humans or animals. Not for animal or human consumption.

Purchasers shall not, and agree not to enable third parties to, analyze, copy, reverse engineer or otherwise attempt to determine the structure or sequence of the product.



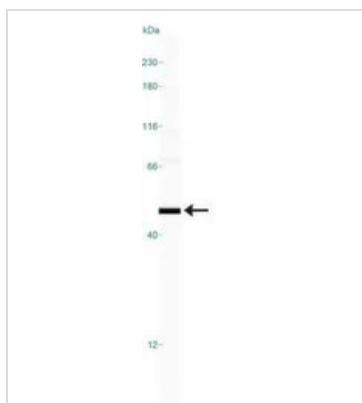
For full product information, images and publications, please visit our [website](#).

DATA IMAGES



GTx48600 WB Image

WB analysis of HepG2 cell lysate using GTx48600 MAT1A + MAT2A antibody.



GTx48600 WB Image

WB analysis of HepG2 cell lysate using GTx48600 MAT1A + MAT2A antibody.



For full product information, images and publications, please visit our [website](https://www.genetex.com).