

## GSK3 beta (phospho Ser9) antibody

**Cat. No. GTX48612**

<b>Host</b>	Rabbit
<b>Clonality</b>	Polyclonal
<b>Isotype</b>	IgG
<b>Applications</b>	WB
<b>Reactivity</b>	Human, Mouse, Rat, Zebrafish, Bovine, Dog, Chicken, Xenopus, Primate

**Package**  
50 µl

## Applications

**Application Note**

\*Optimal dilutions/concentrations should be determined by the researcher.

Suggested dilution	Recommended dilution
--------------------	----------------------

WB	1:1000
----	--------

Not tested in other applications.

<b>Calculated MW</b>	47 kDa. ( <a href="#">Note</a> )
----------------------	----------------------------------

**Product Note**

Specific for the ~46k GSK3 beta protein phosphorylated at Ser9. Also weakly labels the ~51k GSK3 alpha band due to the high degree of homology between the 2 subunits. Immunolabeling is blocked by the phosphopeptide used as antigen but not by the corresponding dephosphopeptide.

## Properties

<b>Form</b>	Liquid
-------------	--------

<b>Buffer</b>	10mM HEPES, 150mM NaCl, 0.01% BSA, 50% Glycerol
---------------	---

<b>Preservative</b>	No preservatives
---------------------	------------------

<b>Storage</b>	Store as concentrated solution. Centrifuge briefly prior to opening vial. For short-term storage (1-2 weeks), store at 4°C. For long-term storage, aliquot and store at -20°C or below. Avoid multiple freeze-thaw cycles.
----------------	--

<b>Concentration</b>	Batch dependent (Please refer to the vial label for the specific concentration.)
----------------------	--

<b>Immunogen</b>	Phosphopeptide corresponding to amino acid residues surrounding the phosphoSer9 of GSK3 beta.
------------------	---

<b>Purification</b>	Purified by antigen-affinity chromatography
---------------------	---

<b>Conjugation</b>	Unconjugated
--------------------	--------------

**Note**

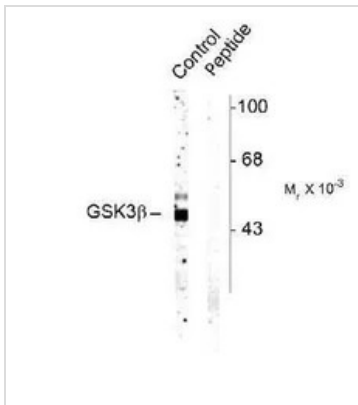
For laboratory research use only. Not for any clinical, therapeutic, or diagnostic use in humans or animals. Not for animal or human consumption.

Purchasers shall not, and agree not to enable third parties to, analyze, copy, reverse engineer or otherwise attempt to determine the structure or sequence of the product.



For full product information, images and publications, please visit our [website](#).

## DATA IMAGES

**GTX48612 WB Image**

WB analysis of rat cortex tissue lysate using GTX48612 GSK3 beta (phospho Ser9) antibody.

Control : without phospho-peptide

Peptide : with phospho-peptide



For full product information, images and publications, please visit our [website](#).