

ERAB antibody

Cat. No. GTX48613

Host	Goat
Clonality	Polyclonal
Isotype	IgG
Applications	WB
Reactivity	Human, Zebrafish

References (1)

Package

50 µg

Applications

Application Note

*Optimal dilutions/concentrations should be determined by the researcher.

Suggested dilution	Recommended dilution
WB	0.3-2µg/ml

Not tested in other applications.

Calculated MW 27 kDa. ([Note](#))

Product Note This antibody is expected to recognise both reported isoforms.

Properties

Form	Liquid
Buffer	TBS, 0.5% BSA
Preservative	0.02% Sodium azide
Storage	Store as concentrated solution. Centrifuge briefly prior to opening vial. For short-term storage (1-2 weeks), store at 4°C. For long-term storage, aliquot and store at -20°C or below. Avoid multiple freeze-thaw cycles.
Concentration	0.50 mg/ml (Please refer to the vial label for the specific concentration.)
Immunogen	Peptide with sequence CIRLDGAIRMQP, from the C Terminus of the protein sequence according to NP_004484.1; NP_001032900.1.
Purification	Purified by ammonium sulphate precipitation followed by antigen affinity chromatography
Conjugation	Unconjugated

Note

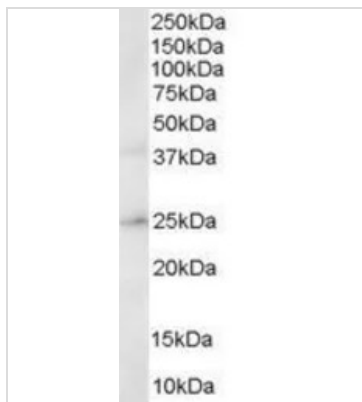
For laboratory research use only. Not for any clinical, therapeutic, or diagnostic use in humans or animals. Not for animal or human consumption.

Purchasers shall not, and agree not to enable third parties to, analyze, copy, reverse engineer or otherwise attempt to determine the structure or sequence of the product.



For full product information, images and publications, please visit our [website](#).

DATA IMAGES

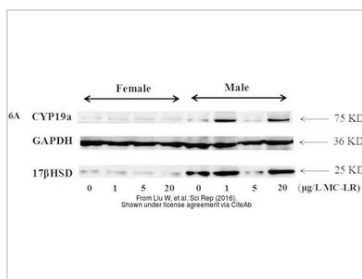


GTX48613 WB Image

WB analysis of human brain lysate using GTX48613 ERAB antibody.

Dilution : 0.3µg/ml

Loading : 30µg protein in RIPA buffer



GTX48613 WB Image

The data was published in the journal Sci Rep in 2016. [PMID: 26960901](https://pubmed.ncbi.nlm.nih.gov/26960901/)



For full product information, images and publications, please visit our [website](https://www.genetex.com).