

## p38 MAPK (phospho Thr180/Tyr182) antibody

**Cat. No. GTX48614**

<b>Host</b>	Rabbit
<b>Clonality</b>	Polyclonal
<b>Isotype</b>	IgG
<b>Applications</b>	WB, IHC
<b>Reactivity</b>	Human, Mouse

References ( 9 )

Package

100 µl

### Applications

#### Application Note

We recommend the following starting dilutions:

For WB: Use at a dilution of 1:1000.

For IHC: Use a dilution of 1:250.

Optimal dilutions/concentrations should be determined by the end user.

### Properties

<b>Form</b>	Liquid
<b>Buffer</b>	10mM HEPES, 150mM NaCl, 0.01% BSA, 50% Glycerol
<b>Preservative</b>	No preservatives
<b>Storage</b>	Store as concentrated solution. Centrifuge briefly prior to opening vial. For short-term storage (1-2 weeks), store at 4°C. For long-term storage, aliquot and store at -20°C or below. Avoid multiple freeze-thaw cycles.
<b>Concentration</b>	Batch dependent (Please refer to the vial label for the specific concentration.)
<b>Immunogen</b>	Synthetic phospho-peptide corresponding to amino acid residues surrounding Thr180/Tyr182 conjugated to KLH
<b>Purification</b>	Affinity Purified
<b>Conjugation</b>	Unconjugated

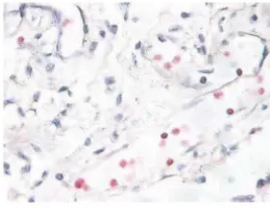
#### Note

For laboratory research use only. Not for any clinical, therapeutic, or diagnostic use in humans or animals. Not for animal or human consumption.

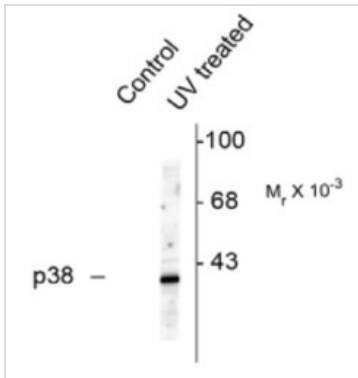
Purchasers shall not, and agree not to enable third parties to, analyze, copy, reverse engineer or otherwise attempt to determine the structure or sequence of the product.



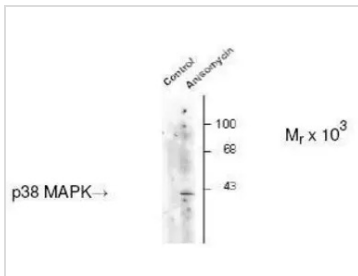
For full product information, images and publications, please visit our [website](#).

**DATA IMAGES**
**Anti-Phospho Thr<sup>180</sup>/Tyr<sup>182</sup> p38 MAPK**

**GTX48614 IHC Image**

Immunostaining of human breast cancer tissue showing p38 when phosphorylated at Thr180/Tyr182 in red using p38 MAPK (phospho Thr180/Tyr182) antibody (GTX48614)


**GTX48614 WB Image**

Western blot of HeLa cell lysates that had been treated with UV or untreated (Control) showing specific immunolabeling of the ~39k p38 MAPK protein phosphorylated at Thr180/Tyr182 using p38 MAPK (phospho Thr180/Tyr182) antibody (GTX48614)


**GTX48614 WB Image**

Western Blot: 38MAPK Phosphospecific Antibody [GTX48614] - Western blot of C-6 glioma cell lysates that had been incubated in the absence (Control) or presence of anisomycin showing specific immunolabeling of the ~39k p38 MAPK protein phosphorylated at Thr180 and Tyr182.



For full product information, images and publications, please visit our [website](https://www.genetex.com).