

beta Tubulin antibody

Cat. No. GTX48617

Host	Rabbit
Clonality	Polyclonal
Isotype	IgG
Applications	WB, ICC/IF, IHC-P
Reactivity	Human, Mouse, Rat, Zebrafish, Bovine, Hamster, Chicken, Pig, Xenopus, Primate, Insect

Package

50 µl

Applications

Application Note

*Optimal dilutions/concentrations should be determined by the researcher.

Suggested dilution	Recommended dilution
WB	1:1000
ICC/IF	1:500 - 1:1000
IHC-P	1:1000 - 1:2000

Not tested in other applications.

Properties

Form	Liquid
Buffer	PBS
Preservative	0.02% Sodium azide
Storage	Store as concentrated solution. Centrifuge briefly prior to opening vial. For short-term storage (1-2 weeks), store at 4°C. For long-term storage, aliquot and store at -20°C or below. Avoid multiple freeze-thaw cycles.
Concentration	1 mg/ml (Please refer to the vial label for the specific concentration.)
Immunogen	A synthetic peptide made to the N-terminal region of human beta Tubulin (within residues 1-100). [Swiss-Prot P07437]
Purification	Purified by antigen-affinity chromatography
Conjugation	Unconjugated

Note

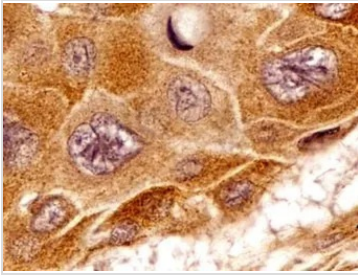
For laboratory research use only. Not for any clinical, therapeutic, or diagnostic use in humans or animals. Not for animal or human consumption.

Purchasers shall not, and agree not to enable third parties to, analyze, copy, reverse engineer or otherwise attempt to determine the structure or sequence of the product.



For full product information, images and publications, please visit our [website](#).

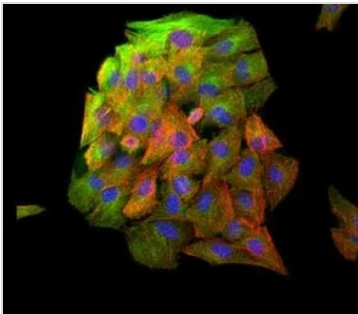
DATA IMAGES



GTX48617 IHC-P Image

IHC-P analysis of human esophageal squamous cell carcinoma (SCC) tissue using GTX48617 beta Tubulin antibody.

Dilution : 1:2000



GTX48617 ICC/IF Image

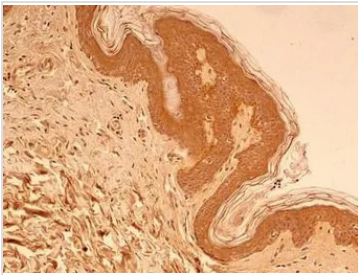
ICC/IF analysis of C2C12 cells using GTX48617 beta Tubulin antibody.

Green : primary antibody

Red : Actin

Blue : DAPI

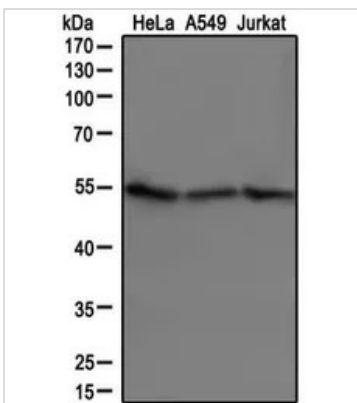
Dilution : 1:5



GTX48617 IHC-P Image

IHC-P analysis of human skin tissue using GTX48617 beta Tubulin antibody.

Dilution : 1:2000



GTX48617 WB Image

WB analysis of HeLa, A549 and Jurkat cell lysates using GTX48617 beta Tubulin antibody.

Dilution : 1 : 1000



For full product information, images and publications, please visit our [website](https://www.genetex.com).