

# TIMP2 antibody [F27P3A4]

**Cat. No. GTX48629**

<b>Host</b>	Mouse
<b>Clonality</b>	Monoclonal
<b>Isotype</b>	IgG2a
<b>Applications</b>	WB, IHC-P
<b>Reactivity</b>	Human, Mouse, Zebrafish, Rabbit, Chicken, Pig

**Package**

25 µg

## Applications

### Application Note

\*Optimal dilutions/concentrations should be determined by the researcher.

Suggested dilution	Recommended dilution
WB	1:100 - 1:2000
IHC-P	1:10 - 1:500

Not tested in other applications.

**Calculated MW** 24 kDa. ( [Note](#) )

**Product Note** Ovalbumin-conjugated synthetic Peptide DSGNDIYGNPI

## Properties

<b>Form</b>	Liquid
<b>Buffer</b>	PBS pH 7.2, 0.09% Sodium Azide
<b>Storage</b>	Store as concentrated solution. Centrifuge briefly prior to opening vial. Store at 4°C. DO NOT FREEZE.
<b>Concentration</b>	0.5 mg/ml (Please refer to the vial label for the specific concentration.)
<b>Immunogen</b>	Synthetic peptide from human TIMP2.
<b>Purification</b>	Purified by antigen-affinity chromatography
<b>Conjugation</b>	Unconjugated

### Note

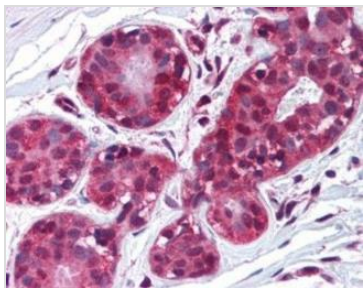
For laboratory research use only. Not for any clinical, therapeutic, or diagnostic use in humans or animals. Not for animal or human consumption.

Purchasers shall not, and agree not to enable third parties to, analyze, copy, reverse engineer or otherwise attempt to determine the structure or sequence of the product.



For full product information, images and publications, please visit our [website](#).

## DATA IMAGES



### GTX48629 IHC-P Image

IHC-P analysis of human breast tissue using GTX48629 TIMP2 antibody [F27P3A4].

Dilution : 10 µg/ml

Antigen retrieval : Heat-induced antigen retrieval



For full product information, images and publications, please visit our [website](#).