

## TIMP2 antibody [F27P3A4]

Cat. No. GTX48629

Host	Mouse
Clonality	Monoclonal
Isotype	IgG2a
Applications	WB, IHC-P
Reactivity	Human, Mouse, Zebrafish, Rabbit, Chicken, Pig

Package

25 µg

## Applications

## Application Note

\*Optimal dilutions/concentrations should be determined by the researcher.

Suggested dilution	Recommended dilution
WB	1:100 - 1:2000
IHC-P	1:10 - 1:500

Not tested in other applications.

Calculated MW	24 kDa. ( <a href="#">Note</a> )
Product Note	Ovalbumin-conjugated synthetic Peptide DSGNDIYGNPI

## Properties

Form	Liquid
Buffer	PBS pH 7.2, 0.09% Sodium Azide
Storage	Store as concentrated solution. Centrifuge briefly prior to opening vial. Store at 4°C. DO NOT FREEZE.
Concentration	0.5 mg/ml (Please refer to the vial label for the specific concentration.)
Immunogen	Synthetic peptide from human TIMP2.
Purification	Purified by antigen-affinity chromatography
Conjugation	Unconjugated

## Note

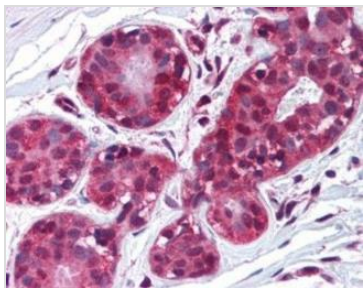
For laboratory research use only. Not for any clinical, therapeutic, or diagnostic use in humans or animals. Not for animal or human consumption.

Purchasers shall not, and agree not to enable third parties to, analyze, copy, reverse engineer or otherwise attempt to determine the structure or sequence of the product.



For full product information, images and publications, please visit our [website](#).

## DATA IMAGES



### GTX48629 IHC-P Image

IHC-P analysis of human breast tissue using GTX48629 TIMP2 antibody [F27P3A4].

Dilution : 10 µg/ml

Antigen retrieval : Heat-induced antigen retrieval



For full product information, images and publications, please visit our [website](#).