

MTBP antibody [PHL-1]

Cat. No. GTX48646

Host	Mouse
Clonality	Monoclonal
Isotype	IgG1
Applications	WB, ELISA
Reactivity	Human

Package

50 µl

Applications

Application Note

*Optimal dilutions/concentrations should be determined by the researcher.

Suggested dilution	Recommended dilution
WB	1:200-1:2000
ELISA	1:2000-1:20000

Not tested in other applications.

Calculated MW 102 kDa. ([Note](#))

Properties

Form	Liquid
Buffer	20mM Potassium Phosphate, 150mM NaCl
Preservative	0.01% Sodium azide
Storage	Store as concentrated solution. Centrifuge briefly prior to opening vial. For short-term storage (1-2 weeks), store at 4°C. For long-term storage, aliquot and store at -20°C or below. Avoid multiple freeze-thaw cycles.
Concentration	Batch dependent (Please refer to the vial label for the specific concentration.)
Immunogen	Recombinant amino-terminal His 6X-tagged polypeptide corresponding to amino acid residues 667-812 of human MTBP protein.
Conjugation	Unconjugated

Note

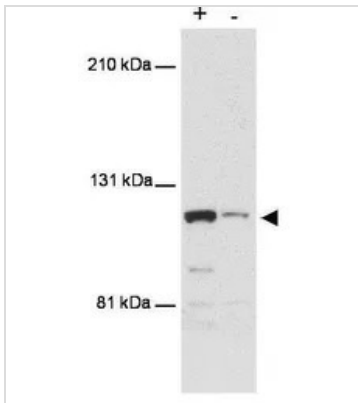
For laboratory research use only. Not for any clinical, therapeutic, or diagnostic use in humans or animals. Not for animal or human consumption.

Purchasers shall not, and agree not to enable third parties to, analyze, copy, reverse engineer or otherwise attempt to determine the structure or sequence of the product.



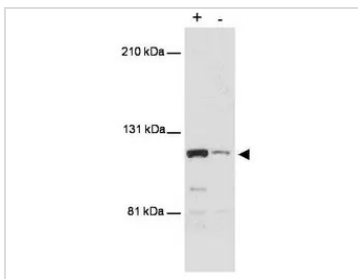
For full product information, images and publications, please visit our [website](#).

DATA IMAGES



GTX48646 WB Image

Western blot using GeneTex's anti-MTBP antibody shows detection of a band ~110 kDa corresponding to human MTBP (arrowhead). Lanes represent human 293 cell lysates with (+) and without (-) transfection with a full-length human expression MTBP construct. The transfected cell extract was diluted 30 fold in extract lacking transfected MTBP. Proteins were separated by SDS-PAGE and transferred onto PDVF membrane. After blocking, the membrane was probed with the primary antibody diluted to 1:500 for 2h at room temperature followed by detection using a Lumi-LightPlus Western Blotting Kit (Roche).



GTX48646 WB Image

WB analysis of transfected (+) and non-transfected (-) 293T whole cell lysate using GTX48646 MTBP antibody [PHL-1].
Dilution : 1:500



For full product information, images and publications, please visit our [website](https://www.genetex.com).