

STAT5A (phospho Tyr694) antibody [5F6.F1]

Cat. No. GTX48647

Host	Mouse
Clonality	Monoclonal
Isotype	IgG1
Applications	WB, ICC/IF, IHC-P, ELISA
Reactivity	Human, Mouse

Package
100 µg

Applications

Application Note

*Optimal dilutions/concentrations should be determined by the researcher.

Suggested dilution	Recommended dilution
WB	1:500-1:2000
ICC/IF	1:50-1:1000
IHC-P	20-40 µg/mL
ELISA	1:20000

Not tested in other applications.

Calculated MW 91 kDa. ([Note](#))

Properties

Form	Liquid
Buffer	20mM Potassium Phosphate, 150mM NaCl
Preservative	0.01% Sodium azide
Storage	Store as concentrated solution. Centrifuge briefly prior to opening vial. For short-term storage (1-2 weeks), store at 4°C. For long-term storage, aliquot and store at -20°C or below. Avoid multiple freeze-thaw cycles.
Concentration	1 mg/ml (Please refer to the vial label for the specific concentration.)
Immunogen	Synthetic peptide corresponding to residues surrounding Y694 of mouse STAT5a protein.
Purification	Protein A purified From tissue culture supernatant
Conjugation	Unconjugated

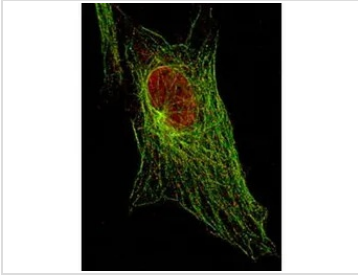


For full product information, images and publications, please visit our [website](#).

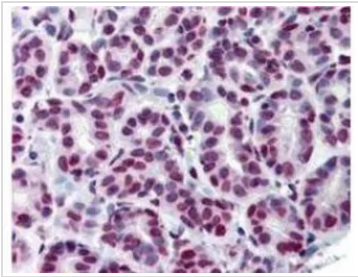
For laboratory research use only. Not for any clinical, therapeutic, or diagnostic use in humans or animals. Not for animal or human consumption.

Note

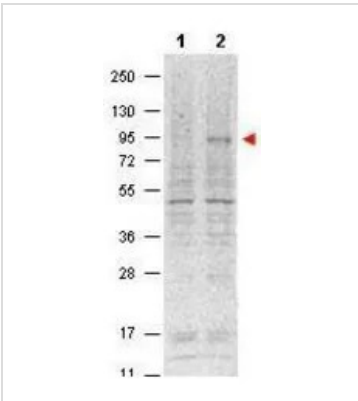
Purchasers shall not, and agree not to enable third parties to, analyze, copy, reverse engineer or otherwise attempt to determine the structure or sequence of the product.

DATA IMAGES

GTx48647 ICC/IF Image

Anti-STAT5 pY694 (MOUSE) Monoclonal Antibody detecting STAT5 in 3T3 cells (immunofluorescent STED microscopy). Red represents STAT5 pY694 protein. Green represents tubulin.


GTx48647 IHC-P Image

Immunohistochemistry using GeneTex Immunochemicals Anti-STAT5 pY694 monoclonal antibody shows detection of phosphorylated STAT5 pY694 in human breast tissue (40X). The antibody was used a dilution to 20 µg/mL. The image shows breast epithelium with moderate nuclear staining. Tissue was formalin fixed and paraffin embedded. No pre-treatment of sample was required. The image shows the localization of antibody as the precipitated red signal, with a hematoxylin purple nuclear counterstain.


GTx48647 WB Image

Western blot using GeneTex's Protein A purified Mouse Monoclonal anti-Stat5 pY694 antibody shows detection of phosphorylated Stat5 (indicated by arrowhead at ~91 kDa) in NK92 cells after 30 min treatment with 1Ku of IL-2 (lane 2). No reactivity is seen for non-phosphorylated Stat5 in untreated cells (lane 1). The membrane was probed with the primary antibody at a 1:1,000 dilution, overnight at 4° C. For detection DyLight800 conjugated Goat-anti-Mouse IgG was used at a 1:20,000 dilution for 30 min at room temperature.



For full product information, images and publications, please visit our [website](https://www.genetex.com).