

## STAT5A (phospho Tyr694) antibody [5F6.F1]

Cat. No. GTX48648

Host	Mouse
Clonality	Monoclonal
Isotype	IgG1
Applications	WB, ICC/IF, IHC-P, ELISA, Multiplexing
Reactivity	Human, Mouse

## Package

50 µg

## Applications

## Application Note

\*Optimal dilutions/concentrations should be determined by the researcher.

Suggested dilution	Recommended dilution
WB	1:500-1:2000
ICC/IF	1:50-1:1000
IHC-P	20-40 µg/mL
ELISA	1:20000
Multiplexing	Assay dependent

Not tested in other applications.

Calculated MW 91 kDa. ( [Note](#) )

## Properties

Form	Liquid
Buffer	20mM Potassium Phosphate, 150mM NaCl
Preservative	0.01% Sodium azide
Storage	Store as concentrated solution. Centrifuge briefly prior to opening vial. For short-term storage (1-2 weeks), store at 4°C. For long-term storage, aliquot and store at -20°C or below. Avoid multiple freeze-thaw cycles.
Concentration	1 mg/ml (Please refer to the vial label for the specific concentration.)
Immunogen	Synthetic peptide corresponding to residues surrounding Y694 of mouse STAT5a protein.
Purification	Protein A purified From tissue culture supernatant
Conjugation	Unconjugated

For full product information, images and publications, please visit our [website](#).

For laboratory research use only. Not for any clinical, therapeutic, or diagnostic use in humans or animals. Not for animal or human consumption.

## Note

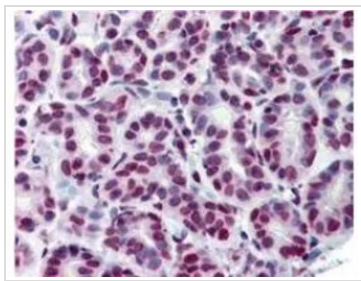
Purchasers shall not, and agree not to enable third parties to, analyze, copy, reverse engineer or otherwise attempt to determine the structure or sequence of the product.

## DATA IMAGES



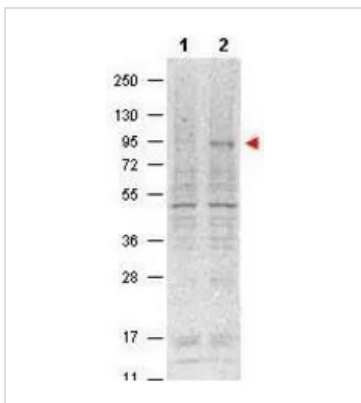
### GTX48648 ICC/IF Image

Anti-Stat5 pY694 (MOUSE) Monoclonal Antibody(1:500) detecting Stat5 in 3T3 cells (immunofluorescent STED microscopy). Red represents Stat5 pY694 protein. Green represents tubulin.



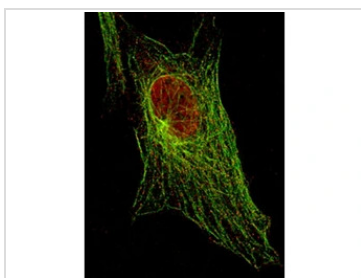
### GTX48648 IHC-P Image

Immunohistochemistry using GeneTex's Anti-Stat5 pY694 monoclonal antibody shows detection of phosphorylated Stat5pY694 in human breast tissue (40X). The antibody was used a dilution to 20 µg/mL. The image shows breast epithelium with moderate nuclear staining. Tissue was formalin fixed and paraffin embedded. No pre-treatment of sample was required. The image shows the localization of antibody as the precipitated red signal, with a hematoxylin purple nuclear counterstain.



### GTX48648 WB Image

Western blot using GeneTex's Protein A purified Mouse Monoclonal anti-Stat5 pY694 antibody shows detection of phosphorylated Stat5 (indicated by arrowhead at ~91 kDa) in NK92 cells after 30 min treatment with 1Ku of IL-2 (lane 2). No reactivity is seen for non-phosphorylated Stat5 in untreated cells (lane 1). The membrane was probed with the primary antibody at a 1:1,000 dilution, overnight at 4° C. For detection DyLight800 conjugated Goat anti Mouse IgG was used at a 1:20,000 dilution for 30 min at room temperature.



### GTX48648 ICC/IF Image

ICC/IF analysis of NIH-3T3 cells using GTX48648 STAT5A (phospho Tyr694) antibody [5F6.F1].

Red : Primary antibody

Green : Tubulin

Dilution : 1:500



For full product information, images and publications, please visit our [website](https://www.genetex.com).