

ATM (phospho Ser1981) antibody

Cat. No. GTX48650

Host	Sheep
Clonality	Polyclonal
Isotype	IgG
Applications	WB, ELISA
Reactivity	Human

Package
50 µg

Applications

Application Note

*Optimal dilutions/concentrations should be determined by the researcher.

Suggested dilution	Recommended dilution
WB	1:500-1:2000
ELISA	1:2000-1:10000

Not tested in other applications.

Calculated MW 351 kDa. ([Note](#))

Properties

Form	Liquid
Buffer	20mM Potassium Phosphate, 150mM NaCl
Preservative	0.01% Sodium azide
Storage	Store as concentrated solution. Centrifuge briefly prior to opening vial. For short-term storage (1-2 weeks), store at 4°C. For long-term storage, aliquot and store at -20°C or below. Avoid multiple freeze-thaw cycles.
Concentration	1 mg/ml (Please refer to the vial label for the specific concentration.)
Immunogen	Synthetic peptide corresponding to a region near serine 1981 of human ATM conjugated to KLH using maleimide.
Purification	Purified by antigen-affinity chromatography.
Conjugation	Unconjugated

Note

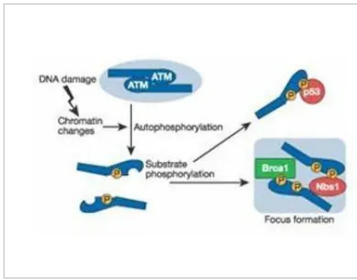
For laboratory research use only. Not for any clinical, therapeutic, or diagnostic use in humans or animals. Not for animal or human consumption.

Purchasers shall not, and agree not to enable third parties to, analyze, copy, reverse engineer or otherwise attempt to determine the structure or sequence of the product.

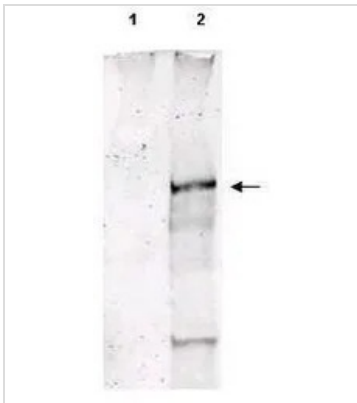


For full product information, images and publications, please visit our [website](#).

DATA IMAGES

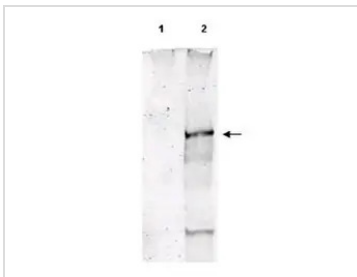


GTX48650 Image



GTX48650 WB Image

Western Blot of Sheep Anti-ATM pS1981 polyclonal antibody. Lane 1: untreated MCF-7 cell lysate. Lane 2: Hydrogen Peroxide stimulated MCF-7 Whole Cell Lysate. Load: 35 µg per lane. Primary antibody: ATM pS1981 antibody at 1:1000 for 1 h at room temperature. Secondary antibody: IRDye™800 conjugated Donkey anti-Sheep IgG secondary antibody at 1:5,000 for 1h at room temperature. Block: 5% BLOTTO overnight at 4°C. Predicted/Observed size: 370 kDa, ATM (370 kDa) is indicated by an arrow. Other band(s): ATM splice variants and isoforms.



GTX48650 WB Image

WB analysis of H2O2 treated (lane 2) and untreated (lane 1) MCF-7 whole cell lysate using GTX48650 ATM (phospho Ser1981) antibody.

Loading : 35 µg

Dilution : 1:1000



For full product information, images and publications, please visit our [website](https://www.genetex.com).