

# AKT antibody

**Cat. No. GTX48651**

<b>Host</b>	Sheep
<b>Clonality</b>	Polyclonal
<b>Isotype</b>	IgG
<b>Applications</b>	WB, ICC/IF, FCM, ELISA, IHC
<b>Reactivity</b>	Human

**Package**

50 µg

## Applications

### Application Note

\*Optimal dilutions/concentrations should be determined by the researcher.

Suggested dilution	Recommended dilution
WB	1:500-1:2000
ICC/IF	Assay dependent
FCM	Assay dependent
ELISA	1:5000-1:20000
IHC	Assay dependent

Not tested in other applications.

## Properties

<b>Form</b>	Liquid
<b>Buffer</b>	20mM Potassium Phosphate, 150mM NaCl
<b>Preservative</b>	0.1% Sodium azide
<b>Storage</b>	Store as concentrated solution. Centrifuge briefly prior to opening vial. For short-term storage (1-2 weeks), store at 4°C. For long-term storage, aliquot and store at -20°C or below. Avoid multiple freeze-thaw cycles.
<b>Concentration</b>	0.9 mg/ml (Please refer to the vial label for the specific concentration.)
<b>Immunogen</b>	Synthetic peptide corresponding to an internal region of human AKT1 protein.
<b>Purification</b>	Purified by antigen-affinity chromatography.
<b>Conjugation</b>	Unconjugated

### Note

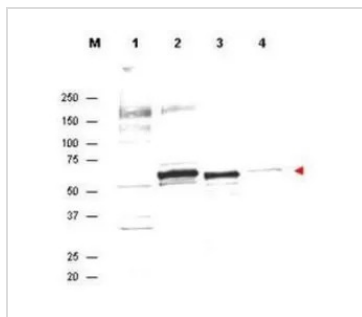
For laboratory research use only. Not for any clinical, therapeutic, or diagnostic use in humans or animals. Not for animal or human consumption.

Purchasers shall not, and agree not to enable third parties to, analyze, copy, reverse engineer or otherwise attempt to determine the structure or sequence of the product.



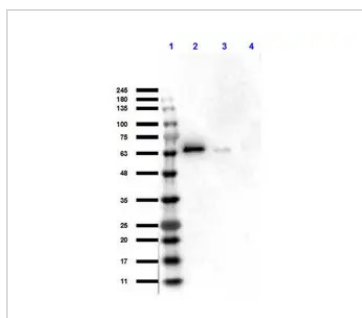
For full product information, images and publications, please visit our [website](#).

## DATA IMAGES



### GTx48651 WB Image

Anti-AKT Antibody in western blot showing detection of endogenous protein in whole cell extracts from H<sub>2</sub>O<sub>2</sub> treated MCF7 cells (lane 2). Recombinant AKT is detected in lane 3. Lanes 1 and 4 contain wcl from HeLa and A431 cells, respectively. Specific band staining is completely blocked when antibody is pre-incubated with the immunizing peptide (data not shown). The band at ~55-60 kDa, indicated by the arrowhead, corresponds to the expected molecular weight of AKT. AKT antibody was diluted 1:300 in 1% BLOTTO and reacted with the membrane overnight at 4° C. IRDYE800 conjugated Dnky-anti-Sheep IgG was used at a 1:10,000 dilution for 45 min at room temperature.



### GTx48651 WB Image

WB analysis of various samples using GTx48651 AKT antibody.

Lane 1 : Protein ladder

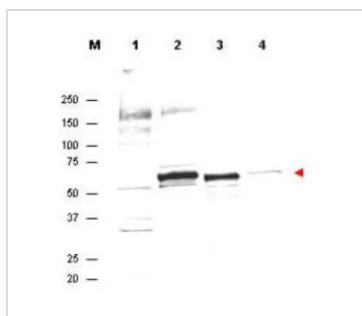
Lane 2 : Recombinant AKT1 protein

Lane 3 : Recombinant AKT2 protein

Lane 3 : Recombinant AKT3 protein

Loading : 50 ng

Dilution : 1:1000



### GTx48651 WB Image

WB analysis of various samples using GTx48651 AKT antibody.

Lane 1 : HeLa whole cell lysate

Lane 2 : H<sub>2</sub>O<sub>2</sub>-treated MCF-7 whole cell lysate

Lane 3 : Recombinant AKT protein

Lane 4 : A431 whole cell lysate

Loading : 35 µg

Dilution : 1:300



For full product information, images and publications, please visit our [website](https://www.genetex.com).