

## IL32A antibody (HRP)

Cat. No. GTX48654

Host	Rabbit
Clonality	Polyclonal
Isotype	IgG
Applications	WB, ELISA, IHC
Reactivity	Human

Package

50 µg

## Applications

## Application Note

\*Optimal dilutions/concentrations should be determined by the researcher.

Suggested dilution	Recommended dilution
WB	1:1000-1:5000
ELISA	1:10000-1:50000
IHC	1:1:500-1:2500

Not tested in other applications.

Calculated MW 27 kDa. ( [Note](#) )

## Properties

Form	Liquid
Buffer	20mM Potassium Phosphate, 150mM NaCl, 1% BSA
Preservative	0.01% Gentamicin Sulfate
Storage	Store as concentrated solution. Centrifuge briefly prior to opening vial. For short-term storage (1-2 weeks), store at 4°C. For long-term storage, aliquot and store at -20°C or below. Avoid multiple freeze-thaw cycles.
Concentration	1 mg/ml (Please refer to the vial label for the specific concentration.)
Immunogen	Full length recombinant human IL-32A protein.
Purification	IgG fraction
Conjugation	Horseradish peroxidase(HRP)

## Note

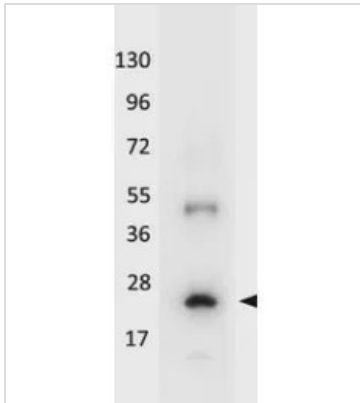
For laboratory research use only. Not for any clinical, therapeutic, or diagnostic use in humans or animals. Not for animal or human consumption.

Purchasers shall not, and agree not to enable third parties to, analyze, copy, reverse engineer or otherwise attempt to determine the structure or sequence of the product.



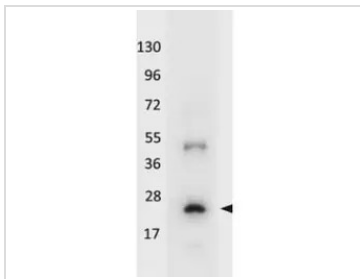
For full product information, images and publications, please visit our [website](#).

## DATA IMAGES



### GTX48654 WB Image

Western blot using GeneTex's HRP conjugated anti-Human IL-32A antibody shows detection of a band ~19 kDa in size corresponding to recombinant human IL-32A. The identity of the higher molecular weight band is unknown. Molecular weight markers are shown (left). After transfer, the membrane was blocked with 3% BSA in TBS followed by reaction with antibody at a 1:5,000 dilution for 30 min at room temperature. Detection occurred using TMB substrate.



### GTX48654 WB Image

WB analysis of recombinant human IL-32A protein using GTX48654 IL32A antibody (HRP).  
Dilution : 1:5000



For full product information, images and publications, please visit our [website](https://www.genetex.com).