

SLIT3 antibody

Cat. No. GTX48660

Host	Rabbit
Clonality	Polyclonal
Isotype	IgG
Applications	WB, ELISA
Reactivity	Human, Mouse, Rat, Bovine, Dog

Package
50 µg

Applications

Application Note

*Optimal dilutions/concentrations should be determined by the researcher.

Suggested dilution	Recommended dilution
WB	1:500-1:2000
ELISA	1:2000-1:10000

Not tested in other applications.

Calculated MW 168 kDa. ([Note](#))

Properties

Form	Liquid
Buffer	20mM Potassium Phosphate, 150mM NaCl
Preservative	0.01% Sodium azide
Storage	Store as concentrated solution. Centrifuge briefly prior to opening vial. For short-term storage (1-2 weeks), store at 4°C. For long-term storage, aliquot and store at -20°C or below. Avoid multiple freeze-thaw cycles.
Concentration	0.752 mg/ml (Please refer to the vial label for the specific concentration.)
Immunogen	Synthetic peptide corresponding to an internal region near aa 1155-1180 of Human SLIT-3 protein.
Purification	Purified by antigen-affinity chromatography. From serum
Conjugation	Unconjugated

Note

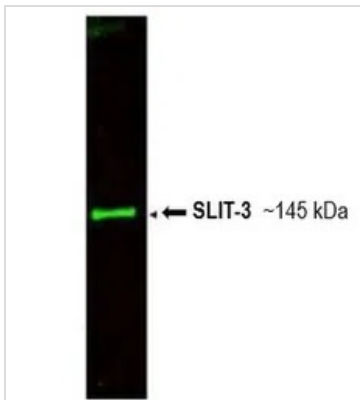
For laboratory research use only. Not for any clinical, therapeutic, or diagnostic use in humans or animals. Not for animal or human consumption.

Purchasers shall not, and agree not to enable third parties to, analyze, copy, reverse engineer or otherwise attempt to determine the structure or sequence of the product.



For full product information, images and publications, please visit our [website](#).

DATA IMAGES

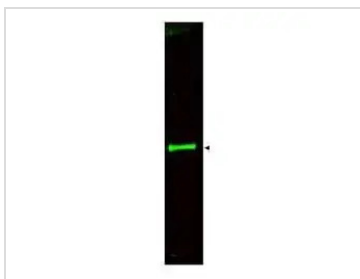


GTX48660 Image

WB analysis of bovine thyroid whole cell lysate using GTX48660 SLIT3 antibody.

Dilution : 1:800

Loading : 35µg



GTX48660 WB Image

WB analysis of bovine thyroid whole cell lysate using GTX48660 SLIT3 antibody.

Loading : 35 µg

Dilution : 1:800



For full product information, images and publications, please visit our [website](#).