

# MCP1 / CCL2 antibody

**Cat. No. GTX48661**

<b>Host</b>	Rabbit
<b>Clonality</b>	Polyclonal
<b>Isotype</b>	IgG
<b>Applications</b>	WB, ELISA
<b>Reactivity</b>	Human

**Package**  
50 µg

## Applications

### Application Note

\*Optimal dilutions/concentrations should be determined by the researcher.

Suggested dilution	Recommended dilution
WB	1:1000
ELISA	1:10000

Not tested in other applications.

**Calculated MW** 11 kDa. ( [Note](#) )

## Properties

<b>Form</b>	Liquid
<b>Buffer</b>	20mM Potassium Phosphate, 150mM NaCl
<b>Preservative</b>	No preservatives
<b>Storage</b>	Store as concentrated solution. Centrifuge briefly prior to opening vial. For short-term storage (1-2 weeks), store at 4°C. For long-term storage, aliquot and store at -20°C or below. Avoid multiple freeze-thaw cycles.
<b>Concentration</b>	1 mg/ml (Please refer to the vial label for the specific concentration.)
<b>Immunogen</b>	Mature length recombinant human MCP-1 protein produced in E.coli.
<b>Purification</b>	IgG fraction This product is an IgG fraction antibody purified from monospecific antiserum by a multi-step process which includes delipidation, salt fractionation and ion exchange chromatography followed by extensive dialysis against the buffer stated above.
<b>Conjugation</b>	Unconjugated

### Note

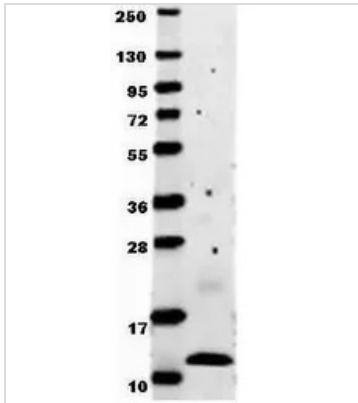
For laboratory research use only. Not for any clinical, therapeutic, or diagnostic use in humans or animals. Not for animal or human consumption.

Purchasers shall not, and agree not to enable third parties to, analyze, copy, reverse engineer or otherwise attempt to determine the structure or sequence of the product.



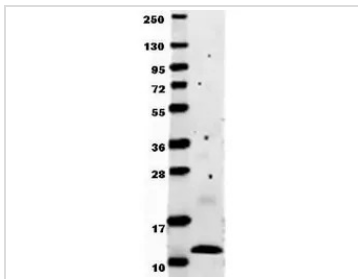
For full product information, images and publications, please visit our [website](#).

## DATA IMAGES



### GTX48661 WB Image

Western Blot of Anti-human MCP-1 antibody shows detection of recombinant human MCP-1 raised in E.coli. Recombinant (0.1 µg, 8.6 kDa) protein was loaded onto and resolved by SDS-PAGE, then transferred to nitrocellulose. The membrane was blocked with 1% BSA in TBST for 30 min at RT, followed by incubation with GeneTex's Anti-Human MCP-1 antibody. After washing, membrane was probed with secondary antibody Dylight 649 Conjugated Anti-Rabbit IgG (H&L) (Goat) Antibody diluted 1:20,000 in blocking buffer) for 30 min. at RT. Data was collected using Bio-Rad VersaDocR 4000 MP imaging system.



### GTX48661 WB Image

WB analysis of recombinant human MCP-1 protein using GTX48661 MCP1 / CCL2 antibody.  
Loading : 0.1 µg



For full product information, images and publications, please visit our [website](https://www.genetex.com).