

Cyclin L1 (Isoform 1) antibody

Cat. No. GTX48663

Host	Rabbit
Clonality	Polyclonal
Isotype	IgG
Applications	WB, IHC-P, IP, ELISA
Reactivity	Human, Mouse, Drosophila

References (1)

Package

100 µg

Applications

Application Note

*Optimal dilutions/concentrations should be determined by the researcher.

Suggested dilution	Recommended dilution
WB	1:2000-1:5000
IHC-P	20 µg/mL-10 mg/mL
IP	1:100
ELISA	1:5000-1:25000

Not tested in other applications.

Calculated MW 60 kDa. ([Note](#))**Product Note** No reaction was observed against other related cyclins.

Properties

Form	Liquid
Buffer	20mM Potassium Phosphate, 150mM NaCl
Preservative	0.01% Sodium azide
Storage	Store as concentrated solution. Centrifuge briefly prior to opening vial. For short-term storage (1-2 weeks), store at 4°C. For long-term storage, aliquot and store at -20°C or below. Avoid multiple freeze-thaw cycles.
Concentration	5 mg/ml (Please refer to the vial label for the specific concentration.)
Immunogen	Synthetic polypeptide corresponding to an internal region near amino acids 300-375 of Human Cyclin L1a protein.
Purification	Protein A purified From serum
Conjugation	Unconjugated



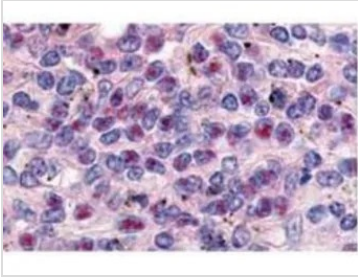
For full product information, images and publications, please visit our [website](#).

For laboratory research use only. Not for any clinical, therapeutic, or diagnostic use in humans or animals. Not for animal or human consumption.

Note

Purchasers shall not, and agree not to enable third parties to, analyze, copy, reverse engineer or otherwise attempt to determine the structure or sequence of the product.

DATA IMAGES

**GTX48663 IHC-P Image**

GeneTex's anti-Cyclin L1a antibody was used at a 10 µg/ml to detect Cyclin L1a in a variety of tissues including breast (collagen), heart, kidney (distal tubules), liver, skeletal muscle, ovary µgranulosa and oocyte, pancreas (islet), placenta (trophoblast), prostate (epithelium), skin, spleen (endothelium), stomach (chief), testes (seminiferous epithelium and leydig), thymus (Has-sal's corpuscle and lymphocytes) and uterus µglandular epithelium and stroma). Low to moderate background staining was noted. This image shows Cyclin L1a staining of human spleen. Tissue was formalin-fixed and paraffin embedded.

**GTX48663 WB Image**

Western blot using GeneTex's Protein A Purified anti-Cyclin L1a antibody shows detection of a band ~59 kDa corresponding to a Cyclin L1a (arrowhead) present in mouse brain whole cell lysate. Approximately 35µg of lysate was separated by 4-20% SDS-PAGE followed by transfer to nitrocellulose. After blocking the membrane was probed with the primary antibody diluted to 1:3,500 for 2h at room temperature.

**GTX48663 WB Image**

WB analysis of mouse brain tissue lysate using GTX48663 Cyclin L1 (Isoform 1) antibody.

Loading : 35 µg

Dilution : 1:3500



For full product information, images and publications, please visit our [website](#).