

NFYA antibody

Cat. No. GTX48667

Host	Rabbit
Clonality	Polyclonal
Isotype	IgG
Applications	WB, IHC-P, ELISA, EMSA
Reactivity	Human

Package
50 µl

Applications

Application Note

*Optimal dilutions/concentrations should be determined by the researcher.

Suggested dilution	Recommended dilution
WB	1:2000-1:10000
IHC-P	1:400
ELISA	1:20000-1:100000
EMSA	2 µL

Not tested in other applications.

Calculated MW 37 kDa. ([Note](#))

Properties

Form	Liquid
Buffer	Filtered-steriled serum
Preservative	0.01% Sodium azide
Storage	Store as concentrated solution. Centrifuge briefly prior to opening vial. For short-term storage (1-2 weeks), store at 4°C. For long-term storage, aliquot and store at -20°C or below. Avoid multiple freeze-thaw cycles.
Immunogen	NF-Y (A subunit specific) peptide corresponding to a region near the N-terminus of the human protein conjugated to KLH.
Purification	Unpurified
Conjugation	Unconjugated

Note

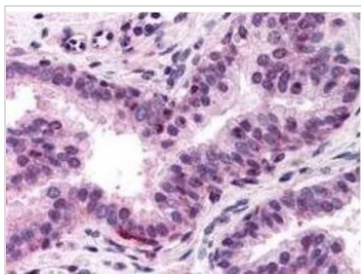
For laboratory research use only. Not for any clinical, therapeutic, or diagnostic use in humans or animals. Not for animal or human consumption.

Purchasers shall not, and agree not to enable third parties to, analyze, copy, reverse engineer or otherwise attempt to determine the structure or sequence of the product.

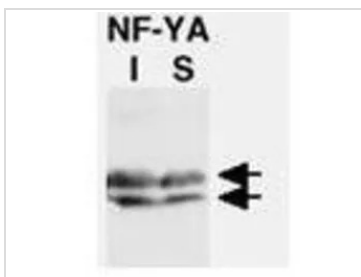


For full product information, images and publications, please visit our [website](#).

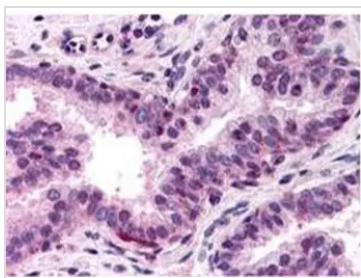
DATA IMAGES

**GTX48667 IHC-P Image**

GeneTex's anti-NF-Y (A Subunit) antibody was diluted at 10 µg/mL for 1 h at RT to detect NF-YA in human prostate tissue. Tissue was formalin fixed paraffin embedded. Antigen retrieval: not required. Peroxidase rabbit secondary antibody at 1:10,000 for 45 min at RT. The image shows the localization of antibody as the precipitated red signal with a hematoxylin purple nuclear counterstain. Localization: NF-Y is nuclear.

**GTX48667 WB Image**

CHO-7 cells were cultured in the absence (I) or presence (S) of cholesterol. Load: 35 µg per lane. Primary antibody: NF-YA antibody at 1:1,000 for overnight at 4°C. Secondary antibody: HRP conjugated Goat-anti-Rabbit IgG [H&L] secondary antibody at 1:10,000 for 45 min at RT. Predicted/Observed size: NF-YA recognized as a doublet of ~ 42 kDa in size. Other band(s): none.

**GTX48667 IHC-P Image**

IHC-P analysis of human prostate tissue using GTX48667 NFYA antibody.
Dilution : 10 µg/mL



For full product information, images and publications, please visit our [website](#).