

IL9 antibody (Biotin)

Cat. No. GTX48670

Host	Rabbit
Clonality	Polyclonal
Isotype	IgG
Applications	WB, ELISA, IHC
Reactivity	Human

Package
50 µg

Applications

Application Note

*Optimal dilutions/concentrations should be determined by the researcher.

Suggested dilution	Recommended dilution
WB	1:2000-1:10000
ELISA	1:20000-1:100000
IHC	1:1:1000-1:5000

Not tested in other applications.

Calculated MW 16 kDa. ([Note](#))

Properties

Form	Liquid
Buffer	20mM Potassium Phosphate, 150mM NaCl, 1% BSA
Preservative	0.01% Sodium azide
Storage	Store as concentrated solution. Centrifuge briefly prior to opening vial. For short-term storage (1-2 weeks), store at 4°C. For long-term storage, aliquot and store at -20°C or below. Avoid multiple freeze-thaw cycles.
Concentration	1 mg/ml (Please refer to the vial label for the specific concentration.)
Immunogen	Full length recombinant human IL-9 protein.
Purification	IgG fraction This product is an IgG fraction antibody purified from monospecific antiserum by a multi-step process which includes delipidation, salt fractionation and ion exchange chromatography followed by extensive dialysis against the buffer stated above.
Conjugation	Biotin



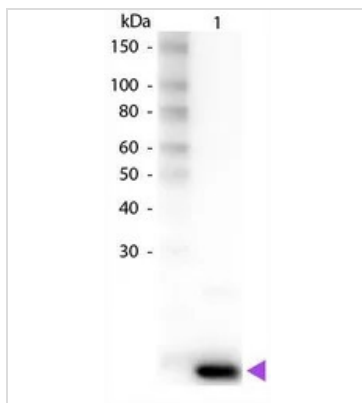
For full product information, images and publications, please visit our [website](#).

For laboratory research use only. Not for any clinical, therapeutic, or diagnostic use in humans or animals. Not for animal or human consumption.

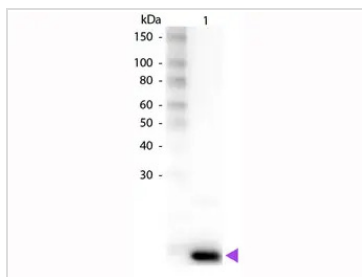
Note

Purchasers shall not, and agree not to enable third parties to, analyze, copy, reverse engineer or otherwise attempt to determine the structure or sequence of the product.

DATA IMAGES

**GTX48670 WB Image**

Western Blot of Rabbit anti-Human IL-9 Biotin Conjugated Antibody. Load: 50 ng Human IL-9 per lane.
Primary antibody: Human IL-9 primary antibody at 1:1,000 overnight at 4°C. Secondary antibody: Peroxidase streptavidin secondary antibody at 1:40,000 for 30 min at RT. Blocking for 30 min at RT.
Predicted/Observed size: 14 kDa for Human IL-9. Other band(s): None.

**GTX48670 WB Image**

WB analysis of human IL9 protein using GTX48670 IL9 antibody (Biotin).
Loading : 50 ng
Dilution : 1:1000



For full product information, images and publications, please visit our [website](#).