

## IL27 antibody (Biotin)

**Cat. No. GTX48684**

|                     |                |
|---------------------|----------------|
| <b>Host</b>         | Rabbit         |
| <b>Clonality</b>    | Polyclonal     |
| <b>Isotype</b>      | IgG            |
| <b>Applications</b> | WB, ELISA, IHC |
| <b>Reactivity</b>   | Mouse          |

**Package**  
50 µg

## Applications

**Application Note**

\*Optimal dilutions/concentrations should be determined by the researcher.

| Suggested dilution | Recommended dilution |
|--------------------|----------------------|
| WB                 | 1:2000-1:10000       |
| ELISA              | 1:20000-1:100000     |
| IHC                | 1:1:1000-1:5000      |

Not tested in other applications.

**Calculated MW** 27 kDa. ([Note](#))

## Properties

|                      |                                                                                                                                                                                                                                                                       |
|----------------------|-----------------------------------------------------------------------------------------------------------------------------------------------------------------------------------------------------------------------------------------------------------------------|
| <b>Form</b>          | Liquid                                                                                                                                                                                                                                                                |
| <b>Buffer</b>        | 20mM Potassium Phosphate, 150mM NaCl, 1% BSA                                                                                                                                                                                                                          |
| <b>Preservative</b>  | 0.01% Sodium azide                                                                                                                                                                                                                                                    |
| <b>Storage</b>       | Store as concentrated solution. Centrifuge briefly prior to opening vial. For short-term storage (1-2 weeks), store at 4°C. For long-term storage, aliquot and store at -20°C or below. Avoid multiple freeze-thaw cycles.                                            |
| <b>Concentration</b> | 1 mg/ml (Please refer to the vial label for the specific concentration.)                                                                                                                                                                                              |
| <b>Immunogen</b>     | Full length recombinant mouse IL27/p28 protein.                                                                                                                                                                                                                       |
| <b>Purification</b>  | IgG fraction<br>This product is an IgG fraction antibody purified from monospecific antiserum by a multi-step process which includes delipidation, salt fractionation and ion exchange chromatography followed by extensive dialysis against the buffer stated above. |
| <b>Conjugation</b>   | Biotin                                                                                                                                                                                                                                                                |



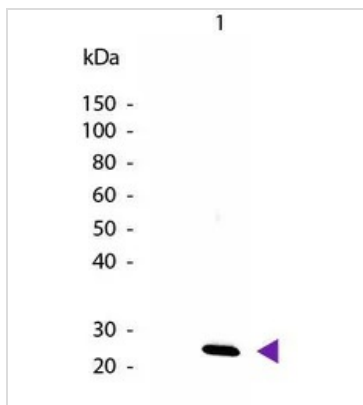
For full product information, images and publications, please visit our [website](#).

For laboratory research use only. Not for any clinical, therapeutic, or diagnostic use in humans or animals. Not for animal or human consumption.

**Note**

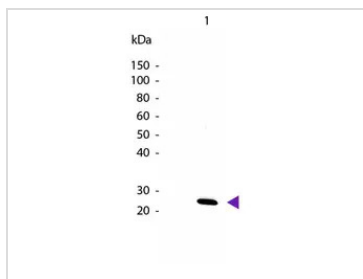
Purchasers shall not, and agree not to enable third parties to, analyze, copy, reverse engineer or otherwise attempt to determine the structure or sequence of the product.

DATA IMAGES



**GTX48684 WB Image**

Western Blot of Biotin Conjugated Rabbit anti-IL-27/p28 antibody. Load: 50 ng Mouse IL-27/p28 per lane. Blocking for 30 min at RT. Predicted/Observed size: 24 kDa for Mouse IL-27/p28. Other band(s): None.



**GTX48684 WB Image**

WB analysis of recombinant mouse IL27 protein using GTX48684 IL27 antibody (Biotin).  
Loading : 50 ng  
Dilution : 1:1000



For full product information, images and publications, please visit our [website](#).