

IL27 antibody (HRP)

Cat. No. GTX48685

Host	Rabbit
Clonality	Polyclonal
Isotype	IgG
Applications	WB, ELISA, IHC
Reactivity	Mouse

Package
50 µg

Applications

Application Note

*Optimal dilutions/concentrations should be determined by the researcher.

Suggested dilution	Recommended dilution
WB	1:1000-1:5000
ELISA	1:10000-1:50000
IHC	1:1:500-1:2500

Not tested in other applications.

Calculated MW 27 kDa. ([Note](#))

Properties

Form	Liquid
Buffer	20mM Potassium Phosphate, 150mM NaCl, 1% BSA
Preservative	0.01% Gentamicin Sulfate
Storage	Store as concentrated solution. Centrifuge briefly prior to opening vial. For short-term storage (1-2 weeks), store at 4°C. For long-term storage, aliquot and store at -20°C or below. Avoid multiple freeze-thaw cycles.
Concentration	1 mg/ml (Please refer to the vial label for the specific concentration.)
Immunogen	Full length recombinant mouse IL27/p28 protein.
Purification	IgG fraction This product is an IgG fraction antibody purified from monospecific antiserum by a multi-step process which includes delipidation, salt fractionation and ion exchange chromatography followed by extensive dialysis against the buffer stated above.
Conjugation	Horseradish peroxidase(HRP)



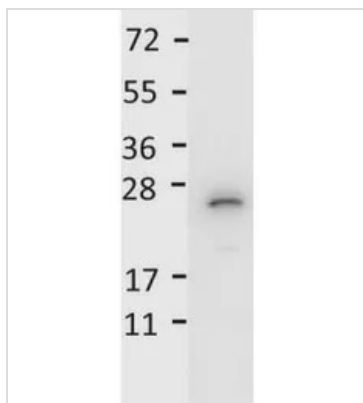
For full product information, images and publications, please visit our [website](#).

For laboratory research use only. Not for any clinical, therapeutic, or diagnostic use in humans or animals. Not for animal or human consumption.

Note

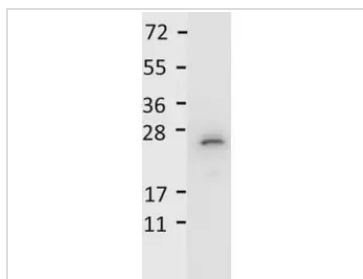
Purchasers shall not, and agree not to enable third parties to, analyze, copy, reverse engineer or otherwise attempt to determine the structure or sequence of the product.

DATA IMAGES



GTX48685 WB Image

Recombinant mouse IL27/p28 was loaded at 0.25 µg. The blot was blocked with 1% BSA in TBST for 30 min at RT. Blot was incubated with rabbit anti-Mouse IL-27/p28 (HRP) antibody in 1% BSA/TBST at 1:5,000 for 30 min at RT. Data was collected using Bio-Rad VersaDocR 4000 MP.



GTX48685 WB Image

WB analysis of recombinant mouse IL27 protein using GTX48685 IL27 antibody (HRP).
 Loading : 0.25 µg
 Dilution : 1:5000



For full product information, images and publications, please visit our [website](#).