

## Jagged 1 antibody

Cat. No. GTX48691

Host	Rabbit
Clonality	Polyclonal
Isotype	IgG
Applications	WB, ICC/IF, IHC-P, ELISA
Reactivity	Human, Mouse

References ( 2 )

Package

100 µg

## Applications

## Application Note

\*Optimal dilutions/concentrations should be determined by the researcher.

Suggested dilution	Recommended dilution
WB	1:500-1:1000
ICC/IF	1:200-1:1000
IHC-P	1:100-1:500
ELISA	1:20000-1:100000

Not tested in other applications.

Calculated MW 134 kDa. ( [Note](#) )

## Properties

Form	Liquid
Buffer	20mM Potassium Phosphate, 150mM NaCl
Preservative	0.01% Sodium azide
Storage	Store as concentrated solution. Centrifuge briefly prior to opening vial. For short-term storage (1-2 weeks), store at 4°C. For long-term storage, aliquot and store at -20°C or below. Avoid multiple freeze-thaw cycles.
Concentration	1.15 mg/ml (Please refer to the vial label for the specific concentration.)
Immunogen	Synthetic peptide corresponding to amino acids near the N-terminus of human Jagged-1 protein.
Purification	Purified by antigen-affinity chromatography. From serum
Conjugation	Unconjugated

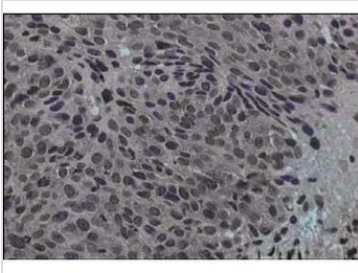
For full product information, images and publications, please visit our [website](#).

For laboratory research use only. Not for any clinical, therapeutic, or diagnostic use in humans or animals. Not for animal or human consumption.

## Note

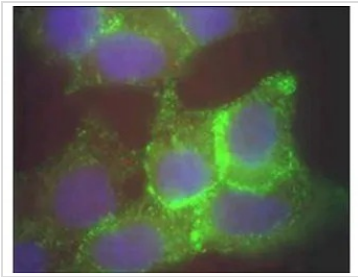
Purchasers shall not, and agree not to enable third parties to, analyze, copy, reverse engineer or otherwise attempt to determine the structure or sequence of the product.

## DATA IMAGES



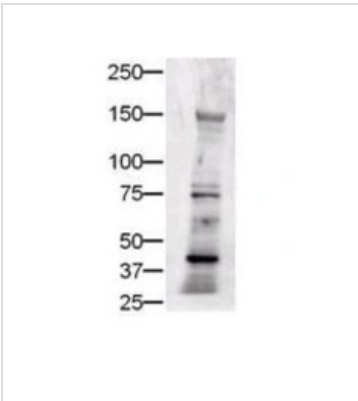
### GTx48691 IHC-P Image

Immunohistochemical staining of human cervical cancer tissue (40X magnification) using GeneTex's Protein A purified anti-Jagged-1 antibody. Tissue was fixed with formalin and embedded in paraffin. Hematoxylin was used to counter-stain cells. A 1:100 dilution of primary antibody was used.



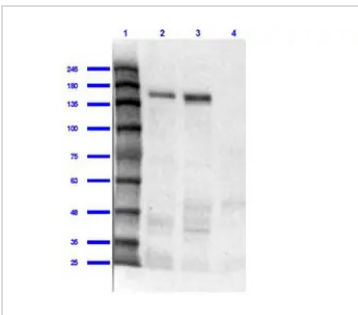
### GTx48691 ICC/IF Image

Immunofluorescence Microscopy using GeneTex's Protein A purified anti-Jagged-1 antibody of human corneal epithelial cells. Primary antibody was used at a 1:500 dilution. The Jagged1 Green staining is localized to the cytoplasm and is consistent with reports in the literature. The nucleus is stained with Bis benzimide (blue)



### GTx48691 WB Image

WB analysis of mouse liver using GTx48691 Jagged 1 antibody at 1:500.



### GTx48691 WB Image

WB analysis of various samples using GTx48691 Jagged 1 antibody.

Lane 1 : Protein ladder

Lane 2 : Mouse liver tissue lysate

Lane 3 : Human liver tissue lysate

Lane 4 : Human lung tissue lysate

Loading : 10 µg

Dilution : 1:1000



For full product information, images and publications, please visit our [website](http://www.genetex.com).