

Casz1 antibody

Cat. No. GTX48704

Host	Rabbit
Clonality	Polyclonal
Isotype	IgG
Applications	WB, ICC/IF, IHC-P, ELISA, ChIP assay, Multiplexing
Reactivity	Human

Package
50 µg

Applications

Application Note

*Optimal dilutions/concentrations should be determined by the researcher.

Suggested dilution	Recommended dilution
WB	1:1000-1:5000
ICC/IF	Assay dependent
IHC-P	Assay dependent
ELISA	1:45000
ChIP assay	Assay dependent
Multiplexing	Assay dependent

Not tested in other applications.

Calculated MW 190 kDa. ([Note](#))

Properties

Form	Liquid
Buffer	20mM Potassium Phosphate, 150mM NaCl
Preservative	0.01% Sodium azide
Storage	Store as concentrated solution. Centrifuge briefly prior to opening vial. For short-term storage (1-2 weeks), store at 4°C. For long-term storage, aliquot and store at -20°C or below. Avoid multiple freeze-thaw cycles.
Concentration	1.07 mg/ml (Please refer to the vial label for the specific concentration.)
Immunogen	Synthetic peptide corresponding to an internal region of Human Casz1 protein.
Purification	Purified by antigen-affinity chromatography. From serum
Conjugation	Unconjugated



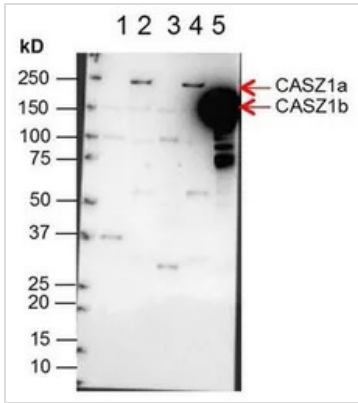
For full product information, images and publications, please visit our [website](#).

For laboratory research use only. Not for any clinical, therapeutic, or diagnostic use in humans or animals. Not for animal or human consumption.

Note

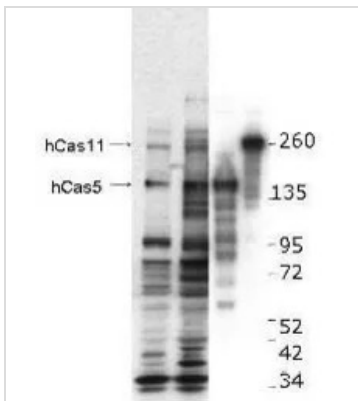
Purchasers shall not, and agree not to enable third parties to, analyze, copy, reverse engineer or otherwise attempt to determine the structure or sequence of the product.

DATA IMAGES



GTx48704 WB Image

Western Blot of Anti-CASZ1 Antibody. Lane 1: NBLS Cytoplasmic (20µg). Lane 2: NBLS Nuclear (3µg). Lane 3: BE2C Cytoplasmic (30µg). Lane 4: BE2C Nuclear (7µg). Lane 5: SY5Y-CASZ1b (10µg). Block: 5% Blotto/TTBS for 1 hour. Primary: Casz1 1:10,000 for 1 hour. Secondary: Goat anti-Rabbit HRP for 1 hour. 240sec exposure. Detects nuclear endogenous CASZ1a and CASZ1b; and transiently transfected CASZ1b isoform.



GTx48704 WB Image

Western blot using GeneTex's anti-hCASZ1 antibody. This blot shows detection of endogenous and transfected human CASZ1 protein in fresh whole cell lysate (~30 µg). Protein was resolved by SDS-PAGE and transferred onto nitrocellulose. After blocking, the membrane was probed with the primary antibody diluted to 1:1,000, incubated 1.5 hours at room temperature, and incubated with HRP-conjugated Goat Anti-Rabbit antibody for 45 min. at room temperature. Lane 1, BE2(s) cell lysate. Lane 2, BE2(N) cell lysate. Lane 3, SY5Y transfected with hCASZ5 (125kDa). Lane 4, SY5Y transfected with hCASZ11 (190kDa).



For full product information, images and publications, please visit our [website](https://www.genetex.com).