

C-Myb antibody

Cat. No. GTX48705

Host	Rabbit
Clonality	Polyclonal
Isotype	IgG
Applications	WB, ELISA, IHC, Multiplexing
Reactivity	Mouse, Monkey

Package
50 µg

Applications

Application Note

*Optimal dilutions/concentrations should be determined by the researcher.

Suggested dilution	Recommended dilution
WB	1:2500
ELISA	1:10000-1:20000
IHC	Assay dependent
Multiplexing	Assay dependent

Not tested in other applications.

Calculated MW 71 kDa. ([Note](#))

Properties

Form	Liquid
Buffer	20mM Potassium Phosphate, 150mM NaCl
Preservative	0.01% Sodium azide
Storage	Store as concentrated solution. Centrifuge briefly prior to opening vial. For short-term storage (1-2 weeks), store at 4°C. For long-term storage, aliquot and store at -20°C or below. Avoid multiple freeze-thaw cycles.
Concentration	1.51 mg/ml (Please refer to the vial label for the specific concentration.)
Immunogen	Peptide corresponding to an internal portion of mouse c-Myb protein.
Purification	Purified by antigen-affinity chromatography. From serum
Conjugation	Unconjugated



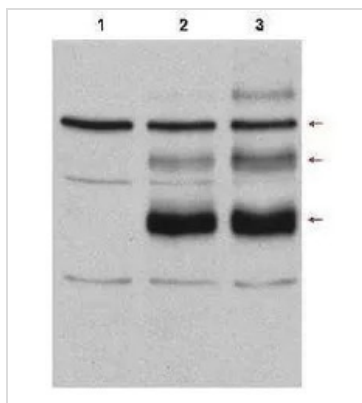
For full product information, images and publications, please visit our [website](#).

For laboratory research use only. Not for any clinical, therapeutic, or diagnostic use in humans or animals. Not for animal or human consumption.

Note

Purchasers shall not, and agree not to enable third parties to, analyze, copy, reverse engineer or otherwise attempt to determine the structure or sequence of the product.

DATA IMAGES



GTX48705 WB Image

Western blot using GeneTex's affinity purified anti-C-Myb antibody in Cos7 cell lysates: Lane 1: vector; Lane 2: transfected with c-myb, no treatment; Lane 3: transfected with c-Myb and heat stress-treated (incubation at 42°C for 30 minutes) to induce c-Myb modification. Lane 3 shows detection of bands at 75, 98, and 125kDa corresponding to overexpressed c-Myb (arrows): wild-type, with one attached SUMO molecule, and with two attached SUMO molecules, respectively. Nitrocellulose 0.45µm membrane was blocked for 1 hr at RT in 10% BLOTTO in PBS. The primary antibody was used at 1:500.



For full product information, images and publications, please visit our [website](https://www.genetex.com).