

## C-Myb antibody

Cat. No. GTX48705

Host	Rabbit
Clonality	Polyclonal
Isotype	IgG
Applications	WB, ELISA, IHC, Multiplexing
Reactivity	Mouse, Monkey

Package  
50 µg

## Applications

## Application Note

\*Optimal dilutions/concentrations should be determined by the researcher.

Suggested dilution	Recommended dilution
WB	1:2500
ELISA	1:10000-1:20000
IHC	Assay dependent
Multiplexing	Assay dependent

Not tested in other applications.

Calculated MW 71 kDa. ( [Note](#) )

## Properties

Form	Liquid
Buffer	20mM Potassium Phosphate, 150mM NaCl
Preservative	0.01% Sodium azide
Storage	Store as concentrated solution. Centrifuge briefly prior to opening vial. For short-term storage (1-2 weeks), store at 4°C. For long-term storage, aliquot and store at -20°C or below. Avoid multiple freeze-thaw cycles.
Concentration	1.51 mg/ml (Please refer to the vial label for the specific concentration.)
Immunogen	Peptide corresponding to an internal portion of mouse c-Myb protein.
Purification	Purified by antigen-affinity chromatography. From serum
Conjugation	Unconjugated

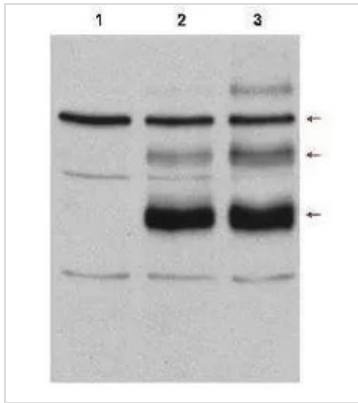
For full product information, images and publications, please visit our [website](#).

For laboratory research use only. Not for any clinical, therapeutic, or diagnostic use in humans or animals. Not for animal or human consumption.

## Note

Purchasers shall not, and agree not to enable third parties to, analyze, copy, reverse engineer or otherwise attempt to determine the structure or sequence of the product.

## DATA IMAGES



### GTx48705 WB Image

Western blot using GeneTex's affinity purified anti-C-Myb antibody in Cos7 cell lysates: Lane 1: vector; Lane 2: transfected with c-myb, no treatment; Lane 3: transfected with c-Myb and heat stress-treated (incubation at 42°C for 30 minutes) to induce c-Myb modification. Lane 3 shows detection of bands at 75, 98, and 125kDa corresponding to overexpressed c-Myb (arrows): wild-type, with one attached SUMO molecule, and with two attached SUMO molecules, respectively. Nitrocellulose 0.45µm membrane was blocked for 1 hr at RT in 10% BLOTTO in PBS. The primary antibody was used at 1:500.



For full product information, images and publications, please visit our [website](https://www.genetex.com).