

NEDD4 antibody

Cat. No. GTX48706

Host	Rabbit
Clonality	Polyclonal
Isotype	IgG
Application	WB, ICC/IF, ELISA
Reactivity	Human

Package
50 µg

APPLICATION

Application Note

*Optimal dilutions/concentrations should be determined by the researcher.

Suggested dilution	Recommended dilution
WB	1:300-1:500
ICC/IF	Assay dependent
ELISA	1:20000-1:35000

Not tested in other applications.

Calculated MW 149 kDa. ([Note](#))

PROPERTIES

Form	Liquid
Buffer	20mM Potassium Phosphate, 150mM NaCl
Preservative	0.01% Sodium azide
Storage	Store as concentrated solution. Centrifuge briefly prior to opening vial. For short-term storage (1-2 weeks), store at 4°C. For long-term storage, aliquot and store at -20°C or below. Avoid multiple freeze-thaw cycles.
Concentration	0.64 mg/ml (Please refer to the vial label for the specific concentration.)
Immunogen	A peptide corresponding to an internal portion of the Nedd4 protein.
Purification	Purified by antigen-affinity chromatography. From serum
Conjugation	Unconjugated

Note

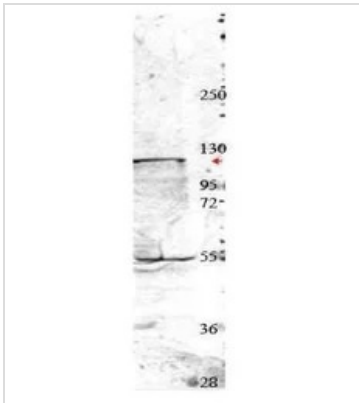
For laboratory research use only. Not for any clinical, therapeutic, or diagnostic use in humans or animals. Not for animal or human consumption.

Purchasers shall not, and agree not to enable third parties to, analyze, copy, reverse engineer or otherwise attempt to determine the structure or sequence of the product.



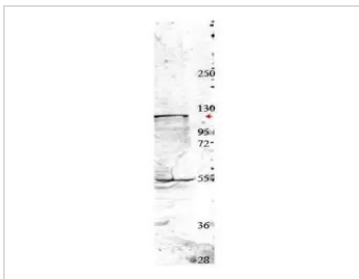
For full product information, images and publications, please visit our [website](#).

DATA IMAGES



GTx48706 WB Image

Western blot using GeneTex's affinity purified anti-Nedd4 antibody shows detection of a 115 kDa band corresponding to endogenous NedD4 (arrowhead) in MDA-MB-435S cell lysates. Primary antibody was used at a 1:350 dilution followed by reaction with a 1:20,000 dilution of HRP goat anti-rabbit IgG.



GTx48706 WB Image

WB analysis of MDA-MB-435S whole cell lysate using GTx48706 NEDD4 antibody.
Dilution : 1:350



For full product information, images and publications, please visit our [website](https://www.genetex.com).