

Pogz antibody

Cat. No. GTX48710

| | |
|--------------|------------|
| Host | Rabbit |
| Clonality | Polyclonal |
| Isotype | IgG |
| Applications | WB, ELISA |
| Reactivity | Mouse |

Package

50 µg

Applications

Application Note

*Optimal dilutions/concentrations should be determined by the researcher.

| Suggested dilution | Recommended dilution |
|--------------------|----------------------|
| WB | 1:2000-1:20000 |
| ELISA | 1:100000-1:400000 |

Not tested in other applications.

Calculated MW 155 kDa. ([Note](#))

Properties

| | |
|---------------|--|
| Form | Liquid |
| Buffer | 20mM Potassium Phosphate, 150mM NaCl |
| Preservative | 0.01% Sodium azide |
| Storage | Store as concentrated solution. Centrifuge briefly prior to opening vial. For short-term storage (1-2 weeks), store at 4°C. For long-term storage, aliquot and store at -20°C or below. Avoid multiple freeze-thaw cycles. |
| Concentration | 1.6 mg/ml (Please refer to the vial label for the specific concentration.) |
| Immunogen | Synthetic peptide corresponding to a region near the N-terminus of mouse Pogz protein. |
| Purification | Purified by antigen-affinity chromatography. From serum |
| Conjugation | Unconjugated |

Note

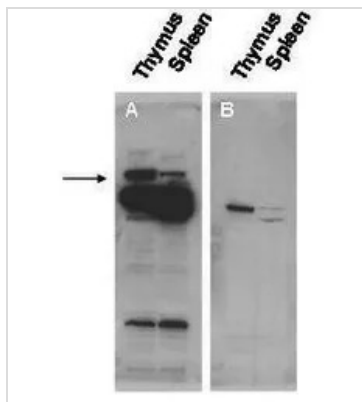
For laboratory research use only. Not for any clinical, therapeutic, or diagnostic use in humans or animals. Not for animal or human consumption.

Purchasers shall not, and agree not to enable third parties to, analyze, copy, reverse engineer or otherwise attempt to determine the structure or sequence of the product.



For full product information, images and publications, please visit our [website](#).

DATA IMAGES



GTX48710 WB Image

Western blot using GeneTex Immuno-chemicals affinity purified anti-Pogz antibody shows detection of Pogz protein (arrowhead) in adult mouse thymus and spleen tissue lysate (Panel A). The lower molecular weight bands may be cross reactive proteins. Pre-incubation of antibody with the immunizing peptide blocks specific antibody reactivity (Panel B). Primary antibody was used at 1:20,000.



For full product information, images and publications, please visit our [website](https://www.genetex.com).