

## eIF3e antibody

Cat. No. GTX48712

Host	Rabbit
Clonality	Polyclonal
Isotype	IgG
Applications	WB, ELISA
Reactivity	Human, Mouse, Monkey

## Package

50 µg

## Applications

## Application Note

\*Optimal dilutions/concentrations should be determined by the researcher.

Suggested dilution	Recommended dilution
WB	1:1000
ELISA	1:90000

Not tested in other applications.

Calculated MW 52 kDa. ( [Note](#) )

## Properties

Form	Liquid
Buffer	20mM Potassium Phosphate, 150mM NaCl
Preservative	0.01% Sodium azide
Storage	Store as concentrated solution. Centrifuge briefly prior to opening vial. For short-term storage (1-2 weeks), store at 4°C. For long-term storage, aliquot and store at -20°C or below. Avoid multiple freeze-thaw cycles.
Concentration	0.8 mg/ml (Please refer to the vial label for the specific concentration.)
Immunogen	Synthetic peptide corresponding to a region near the C-terminus of mouse EIF3S6/Int6.
Purification	Purified by antigen-affinity chromatography. From serum
Conjugation	Unconjugated

## Note

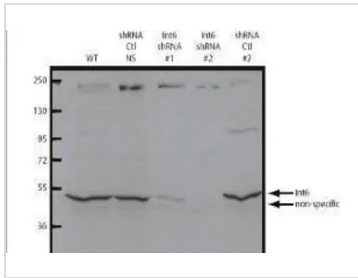
For laboratory research use only. Not for any clinical, therapeutic, or diagnostic use in humans or animals. Not for animal or human consumption.

Purchasers shall not, and agree not to enable third parties to, analyze, copy, reverse engineer or otherwise attempt to determine the structure or sequence of the product.



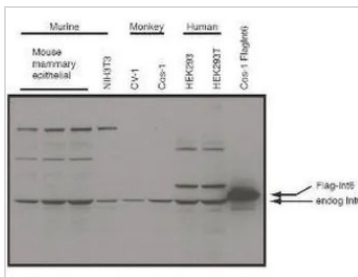
For full product information, images and publications, please visit our [website](#).

## DATA IMAGES



### GTx48712 WB Image

Western blot using GeneTex's affinity purified anti-eIF3S6/Int6 antibody shows detection of endogenous eIF3S6/Int6. Specific staining is not present in lysates containing lentiviral shRNA knockdown vectors



### GTx48712 WB Image

Western blot using GeneTex's affinity purified anti-eIF3S6/Int6 antibody shows detection of endogenous eIF3S6/Int6 in whole cell extracts from murine (HC-11 and NIH3T3), monkey (CV-1 and Cos-1), and human (HEK293T) cell lines as well as over-expressed eIF3S6/Int6 (control transfected flag-tagged Int6). The identity of the higher and lower molecular weight bands is unknown. The band at ~48 kDa, indicated by the arrowhead, corresponds to flag-tagged EIF3S6/Int6. Primary antibody was used at 1:1000.



For full product information, images and publications, please visit our [website](https://www.genetex.com).