

C/EBP delta antibody

Cat. No. GTX48713

Host	Rabbit
Clonality	Polyclonal
Isotype	IgG
Applications	WB, IP, ELISA, IHC (Free Floating)
Reactivity	Human, Mouse

Package
50 µg

Applications

Application Note

*Optimal dilutions/concentrations should be determined by the researcher.

Suggested dilution	Recommended dilution
WB	1:1000-1:15000
IP	0.8-1.5 µg/mL
ELISA	1:4000-1:9000
IHC (Free Floating)	1:2000

Not tested in other applications.

Calculated MW 29 kDa. ([Note](#))

Properties

Form	Liquid
Buffer	20mM Potassium Phosphate, 150mM NaCl
Preservative	0.01% Sodium azide
Storage	Store as concentrated solution. Centrifuge briefly prior to opening vial. For short-term storage (1-2 weeks), store at 4°C. For long-term storage, aliquot and store at -20°C or below. Avoid multiple freeze-thaw cycles.
Concentration	1 mg/ml (Please refer to the vial label for the specific concentration.)
Immunogen	Recombinant protein corresponding to the amino terminus of mouse C/EBP.
Purification	Purified by antigen-affinity chromatography. From serum
Conjugation	Unconjugated



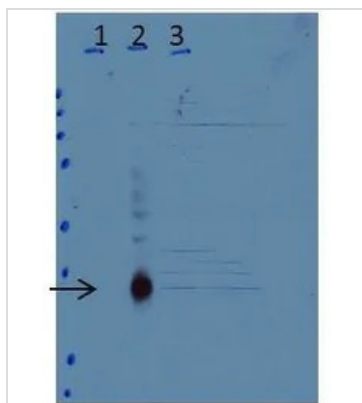
For full product information, images and publications, please visit our [website](#).

For laboratory research use only. Not for any clinical, therapeutic, or diagnostic use in humans or animals. Not for animal or human consumption.

Note

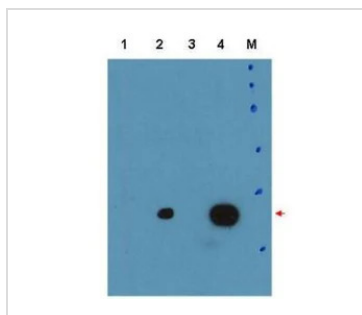
Purchasers shall not, and agree not to enable third parties to, analyze, copy, reverse engineer or otherwise attempt to determine the structure or sequence of the product.

DATA IMAGES



GTX48713 WB Image

Western Blot of Anti-C/EBPd Antibody Lane 1: untreated wild-type (WT) cells Lane 2: WT cells treated 3 h with LPS Lane 3: C/EBPd-knock-out cells treated 3H with LPS Load: 35 µg per lane Primary: Anti-C/EBPd Antibody used at a dilution of 1:15k overnight at 4°C Blocking: buffer TBST ECL was used for detection of endogenous protein in whole cell extracts from mouse primary macrophage cells. Predicted/Observed size: 28.8 kDa, ~35 kDa



GTX48713 WB Image

WB analysis of transfected and non-transfected whole cell lysate using GTX48713 C/EBP delta antibody.

Lane 1 : Human C/EBP beta

Lane 2 : Mouse C/EBP delta

Lane 3 : Mock

Lane 4 : Human C/EBP delta

Loading : 35 µg

Dilution : 1:1500



GTX48713 WB Image

WB analysis of LPS-treated and untreated mouse primary macrophage lysate using GTX48713 C/EBP delta antibody.

Lane 1 : Wild-type

Lane 2 : Wild-type cells treated with LPS

Lane 3 : C/EBP delta knockout cells treated with LPS

Loading : 35 µg

Dilution : 1:1500



For full product information, images and publications, please visit our [website](https://www.genetex.com).