

## IL7 Receptor alpha (phospho Tyr449) antibody

**Cat. No. GTX48714**

|                     |                   |
|---------------------|-------------------|
| <b>Host</b>         | Rabbit            |
| <b>Clonality</b>    | Polyclonal        |
| <b>Isotype</b>      | IgG               |
| <b>Applications</b> | WB, ELISA, IHC    |
| <b>Reactivity</b>   | Human, Mouse, Rat |

**Package**  
50 µg

## Applications

**Application Note**

\*Optimal dilutions/concentrations should be determined by the researcher.

| Suggested dilution | Recommended dilution |
|--------------------|----------------------|
| WB                 | 1:10000              |
| ELISA              | 1:5000-1:50000       |
| IHC                | Assay dependent      |

Not tested in other applications.

**Calculated MW** 52 kDa. ([Note](#))

## Properties

|                      |  |
|----------------------|--|
| <b>Form</b>          | Liquid   |
| <b>Buffer</b>        | 20mM Potassium Phosphate, 150mM NaCl   |
| <b>Preservative</b>  | 0.01% Sodium azide   |
| <b>Storage</b>       | Store as concentrated solution. Centrifuge briefly prior to opening vial. For short-term storage (1-2 weeks), store at 4°C. For long-term storage, aliquot and store at -20°C or below. Avoid multiple freeze-thaw cycles. |
| <b>Concentration</b> | 0.72 mg/ml (Please refer to the vial label for the specific concentration.)  |
| <b>Immunogen</b>     | Synthetic peptide corresponding to residues near Y449 of mouse IL-7 protein.   |
| <b>Purification</b>  | Purified by antigen-affinity chromatography.<br>From serum   |
| <b>Conjugation</b>   | Unconjugated   |

**Note**

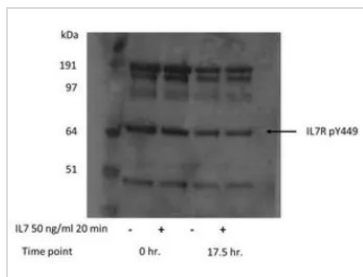
For laboratory research use only. Not for any clinical, therapeutic, or diagnostic use in humans or animals. Not for animal or human consumption.

Purchasers shall not, and agree not to enable third parties to, analyze, copy, reverse engineer or otherwise attempt to determine the structure or sequence of the product.



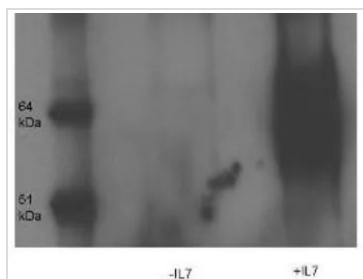
For full product information, images and publications, please visit our [website](#).

DATA IMAGES



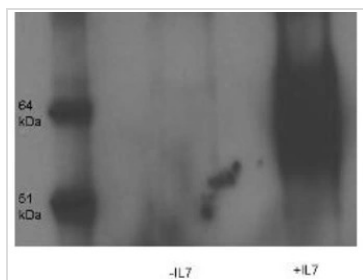
**GTX48714 WB Image**

Western Blot of Rabbit anti- IL-7-Receptor-alpha-chain-pY449 antibody (GTX48714). Load: thymocyte D1 cells treated with or without IL-7 (50 ng/ml) for 20 min. Primary antibody: IL7pY449 antibody at 1:1000 for overnight at 4°C. Secondary antibody: IRDye800™ rabbit secondary antibody at 1:10,000 for 45 min at RT. Block: 5% BLOTTO overnight at 4°C. Predicted/Observed size: 55 kDa, ~64 kDa for IL7pY449. Other band(s): unpecifics.



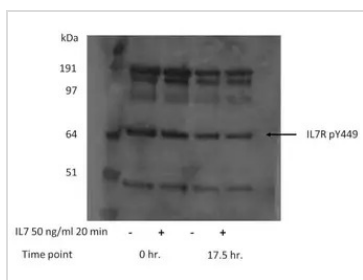
**GTX48714 WB Image**

Immunoprecipitation of Rabbit anti- IL-7-Receptor-alpha-chain-pY449 antibody. Lane 1: thymocyte D1 cells. Lane 2: thymocyte D1 cells treated with IL7 (50 ng/ml). IP: with anti-Phosphotyrosine conjugated to Protein G agarose. Primary antibody: IL7pY449 antibody at 1:10000 for overnight at 4°C. Secondary antibody: HRP-conjugated goat anti-rabbit antibody at 1:10,000 for 45 min at RT and ECL detection. Block: 5% BLOTTO overnight at 4°C. Predicted/Observed size: 55 kDa, ~64 kDa for IL7pY449. Other band(s): unpecifics.



**GTX48714 WB Image**

WB analysis of IL7-treated and untreated D1 whole cell lysate using GTX48714 IL7 Receptor alpha (phospho Tyr449) antibody. IP with anti-phosphotyrosine antibody  
Dilution : 1:10000



**GTX48714 WB Image**

WB analysis of IL7-treated and untreated D1 whole cell lysate using GTX48714 IL7 Receptor alpha (phospho Tyr449) antibody.  
Dilution : 1:1000



For full product information, images and publications, please visit our [website](#).