

## GRASP antibody

**Cat. No. GTX48721**

<b>Host</b>	Rabbit
<b>Clonality</b>	Polyclonal
<b>Isotype</b>	IgG
<b>Applications</b>	WB, IP, ELISA
<b>Reactivity</b>	Human, Mouse

**Package**  
50 µg

## Applications

**Application Note**

\*Optimal dilutions/concentrations should be determined by the researcher.

Suggested dilution	Recommended dilution
WB	1:500-1:3000
IP	1 µg
ELISA	1:4000-1:20000

Not tested in other applications.

**Calculated MW** 42 kDa. ([Note](#))

## Properties

<b>Form</b>	Liquid
<b>Buffer</b>	20mM Potassium Phosphate, 150mM NaCl
<b>Preservative</b>	0.01% Sodium azide
<b>Storage</b>	Store as concentrated solution. Centrifuge briefly prior to opening vial. For short-term storage (1-2 weeks), store at 4°C. For long-term storage, aliquot and store at -20°C or below. Avoid multiple freeze-thaw cycles.
<b>Concentration</b>	1.03 mg/ml (Please refer to the vial label for the specific concentration.)
<b>Immunogen</b>	Synthetic peptide corresponding to amino acids near the amino terminus of mouse Tamalin protein.
<b>Purification</b>	Purified by antigen-affinity chromatography. From serum
<b>Conjugation</b>	Unconjugated

**Note**

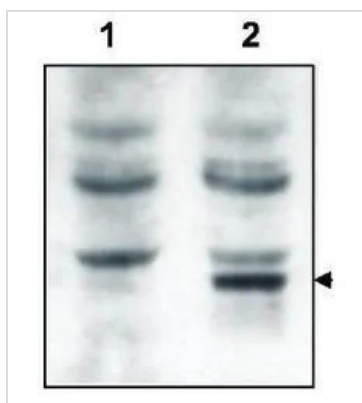
For laboratory research use only. Not for any clinical, therapeutic, or diagnostic use in humans or animals. Not for animal or human consumption.

Purchasers shall not, and agree not to enable third parties to, analyze, copy, reverse engineer or otherwise attempt to determine the structure or sequence of the product.

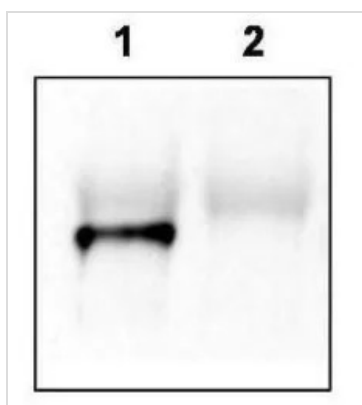


For full product information, images and publications, please visit our [website](#).

## DATA IMAGES

**GTX48721 WB Image**

Western blot using GeneTex's affinity purified anti-Tamalin to detect over-expressed Tamalin in HEK293 cells (lane 2, arrowhead). Lane 1 shows the non-transfected control. Cell extracts were electrophoresed and transferred to nitrocellulose. The membrane was probed with the primary antibody at a 1:2,000 dilution.

**GTX48721 IP Image**

Mouse brain lysate was immunoprecipitated with anti-Tamalin antiserum. A blot was prepared and probed with affinity purified anti-Tamalin. Lane 1 is wild-type brain lysate; Lane 2 is Tamalin knock-out brain lysate. The membrane was probed with the primary antibody at a 1:1,000 dilution.



For full product information, images and publications, please visit our [website](#).