

AHA-1 antibody

Cat. No. GTX48723

Host	Rabbit
Clonality	Polyclonal
Isotype	IgG
Applications	WB, IP, ELISA, IHC
Reactivity	Human, Monkey

Package
50 µg

Applications

Application Note

*Optimal dilutions/concentrations should be determined by the researcher.

Suggested dilution	Recommended dilution
WB	1 µg/mL
IP	Assay dependent
ELISA	1:35000-1:185000
IHC	Assay dependent

Not tested in other applications.

Calculated MW 38 kDa. ([Note](#))

Properties

Form	Liquid
Buffer	20mM Potassium Phosphate, 150mM NaCl
Preservative	0.01% Sodium azide
Storage	Store as concentrated solution. Centrifuge briefly prior to opening vial. For short-term storage (1-2 weeks), store at 4°C. For long-term storage, aliquot and store at -20°C or below. Avoid multiple freeze-thaw cycles.
Concentration	1 mg/ml (Please refer to the vial label for the specific concentration.)
Immunogen	Synthetic peptide corresponding to an internal region of human AHA1 protein.
Purification	Purified by antigen-affinity chromatography. From serum
Conjugation	Unconjugated

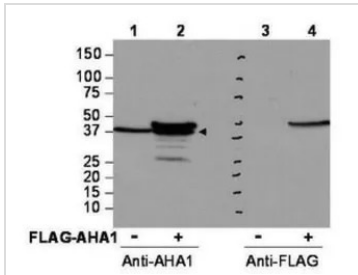


For full product information, images and publications, please visit our [website](#).

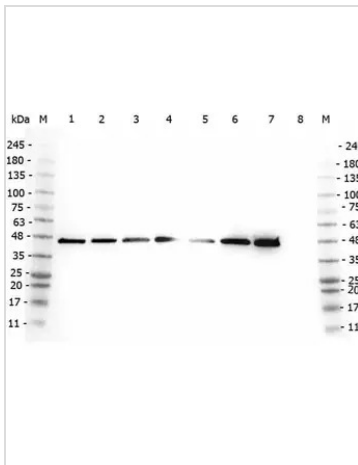
For laboratory research use only. Not for any clinical, therapeutic, or diagnostic use in humans or animals. Not for animal or human consumption.

Note

Purchasers shall not, and agree not to enable third parties to, analyze, copy, reverse engineer or otherwise attempt to determine the structure or sequence of the product.

DATA IMAGES

GTx48723 WB Image

Western blot using GeneTex's affinity purified anti-AHA1 antibody shows detection of AHA1 in Cos7 cells. For Lanes 2 and 4, Cos7 cells were transfected with pcDNA3-FLAG-AHA1. For Lanes 1 and 3, Cos7 cells were not transfected. Extracts (40 µg per lane) were electrophoresed and transferred to nitrocellulose. The membrane was probed with anti-AHA1 (lanes 1 and 2, 1:2,000 dilution) or anti-FLAG (lanes 3 and 4). The lower band seen in anti-AHA1 blotting (arrowhead) is endogenous AHA1.


GTx48723 WB Image

WB analysis of various samples using GTx48723 AHA-1 antibody.

Lane 1 : 293T whole cell lysate

Lane 2 : HeLa whole cell lysate

Lane 3 : MCF-7 whole cell lysate

Lane 4 : Jurkat whole cell lysate

Lane 5 : A431 whole cell lysate

Lane 6 : Raji whole cell lysate

Lane 7 : Ramos whole cell lysate

Lane 8 : NIH-3T3 whole cell lysate

Loading : 35 µg

Dilution : 1:2000



For full product information, images and publications, please visit our [website](https://www.genetex.com).