

Cyclin E2 antibody

Cat. No. GTX48724

| | |
|--------------|---------------|
| Host | Rabbit |
| Clonality | Polyclonal |
| Isotype | IgG |
| Applications | WB, IP, ELISA |
| Reactivity | Human, Mouse |

References (1)

Package

50 µg

Applications

Application Note

*Optimal dilutions/concentrations should be determined by the researcher.

| Suggested dilution | Recommended dilution |
|--------------------|----------------------|
| WB | 1:200-1:2000 |
| IP | 1:100 |
| ELISA | 1:20000-1:85000 |

Not tested in other applications.

Calculated MW 47 kDa. ([Note](#))

Properties

| | |
|---------------|--|
| Form | Liquid |
| Buffer | 20mM Potassium Phosphate, 150mM NaCl |
| Preservative | 0.01% Sodium azide |
| Storage | Store as concentrated solution. Centrifuge briefly prior to opening vial. For short-term storage (1-2 weeks), store at 4°C. For long-term storage, aliquot and store at -20°C or below. Avoid multiple freeze-thaw cycles. |
| Concentration | 1.17 mg/ml (Please refer to the vial label for the specific concentration.) |
| Immunogen | Synthetic peptide corresponding to amino acids at the carboxyl terminus of the Cyclin E2 protein. |
| Purification | Purified by antigen-affinity chromatography. From serum |
| Conjugation | Unconjugated |

Note

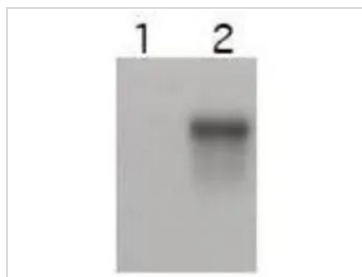
For laboratory research use only. Not for any clinical, therapeutic, or diagnostic use in humans or animals. Not for animal or human consumption.

Purchasers shall not, and agree not to enable third parties to, analyze, copy, reverse engineer or otherwise attempt to determine the structure or sequence of the product.



For full product information, images and publications, please visit our [website](#).

DATA IMAGES



GTX48724 WB Image

Western blot using GeneTex's affinity purified anti-Cyclin E2 antibody shows specific detection of Cyclin E2. Cell extracts over-expressing mouse Cyclin E1 (lane 1) and Cyclin E2 (lane 2) were electrophoresed, transferred to nitrocellulose, and probed with the anti-Cyclin E2 antibody. The affinity purified antibody also detects endogenous Cyclin E2 in Skp2^{-/-} MEF cells. (data not shown).



For full product information, images and publications, please visit our [website](https://www.genetex.com).