

## Mlf1 Interacting Protein antibody

Cat. No. GTX48731

Host	Rabbit
Clonality	Polyclonal
Isotype	IgG
Applications	WB, ELISA, IHC
Reactivity	Human, Bovine, Dog, Chimpanzee

## Package

50 µg

## Applications

## Application Note

\*Optimal dilutions/concentrations should be determined by the researcher.

Suggested dilution	Recommended dilution
WB	1:500-1:2000
ELISA	1:5000-1:25000
IHC	Assay dependent

Not tested in other applications.

**Calculated MW** 48 kDa. ( [Note](#) )

## Properties

Form	Liquid
Buffer	20mM Potassium Phosphate, 150mM NaCl
Preservative	0.01% Sodium azide
Storage	Store as concentrated solution. Centrifuge briefly prior to opening vial. For short-term storage (1-2 weeks), store at 4°C. For long-term storage, aliquot and store at -20°C or below. Avoid multiple freeze-thaw cycles.
Concentration	1.06 mg/ml (Please refer to the vial label for the specific concentration.)
Immunogen	Synthetic peptide corresponding to amino acids surrounding Thr78 of human MLF1IP protein.
Purification	Purified by antigen-affinity chromatography. From serum
Conjugation	Unconjugated

## Note

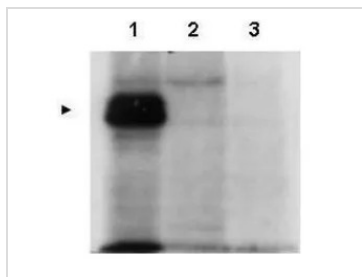
For laboratory research use only. Not for any clinical, therapeutic, or diagnostic use in humans or animals. Not for animal or human consumption.

Purchasers shall not, and agree not to enable third parties to, analyze, copy, reverse engineer or otherwise attempt to determine the structure or sequence of the product.



For full product information, images and publications, please visit our [website](#).

## DATA IMAGES



### GTX48731 WB Image

Western blot using GeneTex's affinity purified anti-MLF1IP antibody shows detection of MLF1IP (arrowhead) in HeLa cells transfected with ZZ-tagged MLF1IP (Lane 1). Lane 2 is lysate from non-transfected HeLa cells, and Lane 3 is lysate from HeLa cells containing a knock-out mutation for PBIP1/MLF1IP.



For full product information, images and publications, please visit our [website](#).