

Histone H2A.vS137ph (phospho Ser137) antibody

Cat. No. GTX48733

Host	Rabbit
Clonality	Polyclonal
Isotype	IgG
Applications	WB, ICC/IF, IHC-P, ELISA, ChIP assay, EM, Multiplexing
Reactivity	Drosophila

References (2)

Package

50 µg

Applications

Application Note

*Optimal dilutions/concentrations should be determined by the researcher.

Suggested dilution	Recommended dilution
WB	1:400-1:1600
ICC/IF	Assay dependent
IHC-P	2 µg/mL
ELISA	1:29000-1:30000
ChIP assay	Assay dependent
EM	Assay dependent
Multiplexing	Assay dependent

Not tested in other applications.

Calculated MW 15 kDa. ([Note](#))

Product Note

Reactivity occurs against Drosophila H2AvD pS137 protein and the antibody is specific for the phosphorylated form of the protein. Reactivity with non-phosphorylated Drosophila H2AvD is minimal by ELISA.

Properties

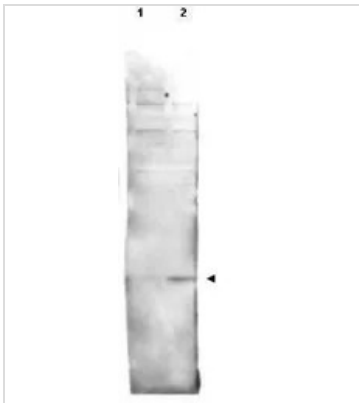
Form	Liquid
Buffer	20mM Potassium Phosphate, 150mM NaCl
Preservative	0.01% Sodium azide
Storage	Store as concentrated solution. Centrifuge briefly prior to opening vial. For short-term storage (1-2 weeks), store at 4°C. For long-term storage, aliquot and store at -20°C or below. Avoid multiple freeze-thaw cycles.
Concentration	1.1 mg/ml (Please refer to the vial label for the specific concentration.)
Immunogen	Synthetic peptide corresponding to the C-Terminal region near amino acids 125-141 of Drosophila melanogaster (fruit fly) H2AvD protein.



For full product information, images and publications, please visit our [website](#).

Purification	Purified by antigen-affinity chromatography. From serum
Conjugation	Unconjugated
Note	For laboratory research use only. Not for any clinical, therapeutic, or diagnostic use in humans or animals. Not for animal or human consumption. Purchasers shall not, and agree not to enable third parties to, analyze, copy, reverse engineer or otherwise attempt to determine the structure or sequence of the product.

DATA IMAGES



GTX48733 WB Image

Western blot using GeneTex's affinity purified anti-histone H2AvD pS137 antibody shows detection of a band at ~15 kDa corresponding to phosphorylated H2AvD (lane 2 arrow-head). Lanes contain either mock-irradiated (lane 1) or 4000-RAD gamma irradiated (lane 2) *Drosophila melanogaster* (3rd instar) larvae brain WC lysate separated on by SDS-PAGE and transferred to nitrocellulose. After blocking the membrane was probed with the primary antibody diluted to 1:500. Washes and reaction with secondary antibody followed incubation. Use HRP conjugated Gt-a-Rabbit IgG [H&L] MX and ECL for detection.



For full product information, images and publications, please visit our [website](https://www.genetex.com).