

Rfa2 (Pan Reactive) antibody

Cat. No. GTX48746

Host	Rabbit
Clonality	Polyclonal
Isotype	IgG
Applications	WB, IP, ELISA
Reactivity	Yeast

Package
50 µg

Applications

Application Note

*Optimal dilutions/concentrations should be determined by the researcher.

Suggested dilution	Recommended dilution
WB	1:100-1:500
IP	1:100
ELISA	1:1000-1:3000

Not tested in other applications.

Calculated MW 30 kDa. ([Note](#))

Properties

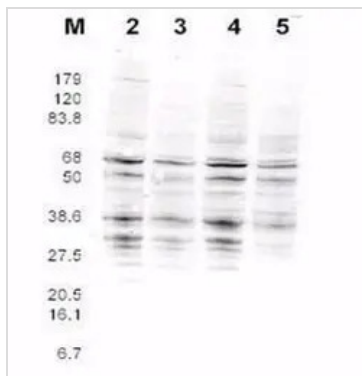
Form	Liquid
Buffer	20mM Potassium Phosphate, 150mM NaCl
Preservative	0.01% Sodium azide
Storage	Store as concentrated solution. Centrifuge briefly prior to opening vial. For short-term storage (1-2 weeks), store at 4°C. For long-term storage, aliquot and store at -20°C or below. Avoid multiple freeze-thaw cycles.
Concentration	0.12 mg/ml (Please refer to the vial label for the specific concentration.)
Immunogen	Synthetic peptide corresponding to an internal region near aa 110-135 (of 273) of yeast DNA Replication Factor A (RFA2).
Purification	Purified by antigen-affinity chromatography. From serum
Conjugation	Unconjugated

Note For laboratory research use only. Not for any clinical, therapeutic, or diagnostic use in humans or animals. Not for animal or human consumption.

Purchasers shall not, and agree not to enable third parties to, analyze, copy, reverse engineer or otherwise attempt to determine the structure or sequence of the product.



For full product information, images and publications, please visit our [website](#).

DATA IMAGES

GTX48746 WB Image

This product was assayed by western blotting against RFA2 containing cell lysates. Blot incubated for 1 hr at RT with affinity purified Rabbit anti-RFA2 pan reactive Lot 13229 at 1.0 µg/ml followed by 1:5000 dilution of IRDye800 sheep anti-Rabbit IgG for 1 hr at RT.



For full product information, images and publications, please visit our [website](#).