

Rfa2 (phospho Ser122) antibody

Cat. No. GTX48747

Host	Rabbit
Clonality	Polyclonal
Isotype	IgG
Applications	WB, IP, ELISA
Reactivity	Yeast

Package
50 µg

Applications

Application Note

*Optimal dilutions/concentrations should be determined by the researcher.

Suggested dilution	Recommended dilution
WB	1:500-1:1000
IP	1:100
ELISA	1:8000-1:20000

Not tested in other applications.

Calculated MW 30 kDa. ([Note](#))

Product Note

This phospho specific polyclonal antibody is specific for phosphorylated pS122 of yeast RFA2. Reactivity with non-phosphorylated yeast RFA2 is minimal by ELISA.

Properties

Form	Liquid
Buffer	20mM Potassium Phosphate, 150mM NaCl
Preservative	0.01% Sodium azide
Storage	Store as concentrated solution. Centrifuge briefly prior to opening vial. For short-term storage (1-2 weeks), store at 4°C. For long-term storage, aliquot and store at -20°C or below. Avoid multiple freeze-thaw cycles.
Concentration	0.54 mg/ml (Please refer to the vial label for the specific concentration.)
Immunogen	Synthetic peptide corresponding to an internal region near aa 110-135 (of 273) of yeast DNA Replication Factor A (RFA2).
Purification	Purified by antigen-affinity chromatography. From serum
Conjugation	Unconjugated



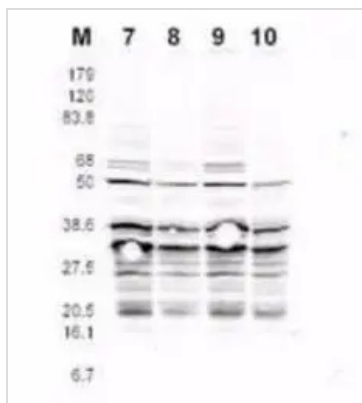
For full product information, images and publications, please visit our [website](#).

For laboratory research use only. Not for any clinical, therapeutic, or diagnostic use in humans or animals. Not for animal or human consumption.

Note

Purchasers shall not, and agree not to enable third parties to, analyze, copy, reverse engineer or otherwise attempt to determine the structure or sequence of the product.

DATA IMAGES

**GTX48747 WB Image**

This product was assayed by western blotting against RFA2 containing cell lysates. Affinity purified rabbit anti-RFA2 pS122 specific Lot 13230 at 1.0 µg/ml for 1 hr at RT followed by IRDye 800 sheep anti-Rabbit IgG1:5000 1 hr RT.



For full product information, images and publications, please visit our [website](#).