

## IL17F antibody (HRP)

Cat. No. GTX48757

Host	Rabbit
Clonality	Polyclonal
Isotype	IgG
Application	WB, ELISA, IHC
Reactivity	Mouse

Package

50 µg

## APPLICATION

## Application Note

\*Optimal dilutions/concentrations should be determined by the researcher.

Suggested dilution	Recommended dilution
WB	1:1000-1:5000
ELISA	1:10000-1:50000
IHC	1:1:500-1:2500

Not tested in other applications.

Calculated MW 18 kDa. ( [Note](#) )

## PROPERTIES

Form	Liquid
Buffer	20mM Potassium Phosphate, 150mM NaCl, 1% BSA
Preservative	0.01% Gentamicin Sulfate
Storage	Store as concentrated solution. Centrifuge briefly prior to opening vial. For short-term storage (1-2 weeks), store at 4°C. For long-term storage, aliquot and store at -20°C or below. Avoid multiple freeze-thaw cycles.
Concentration	1 mg/ml (Please refer to the vial label for the specific concentration.)
Immunogen	Full length recombinant mouse IL17-F protein.
Purification	IgG fraction
Conjugation	Horseradish peroxidase(HRP)

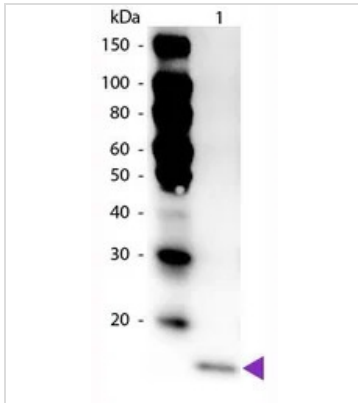
## Note

For laboratory research use only. Not for any clinical, therapeutic, or diagnostic use in humans or animals. Not for animal or human consumption.

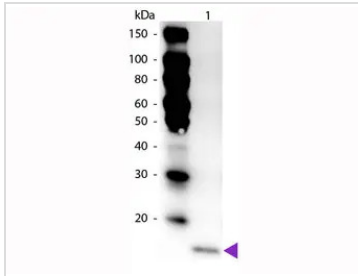
Purchasers shall not, and agree not to enable third parties to, analyze, copy, reverse engineer or otherwise attempt to determine the structure or sequence of the product.



For full product information, images and publications, please visit our [website](#).

**DATA IMAGES**

**GTX48757 WB Image**

Western Blot of Rabbit anti-IL-17F antibody.(HRP) Load: 50 ng Mouse IL-17F per lane.Predicted/Observed size: 16 kDa, 16 kDa for Mouse IL-17F. Other band(s): None.


**GTX48757 WB Image**

WB analysis of recombinant mouse IL17F protein using GTX48757 IL17F antibody (HRP).  
Dilution : 1:1000



For full product information, images and publications, please visit our [website](#).