

IL17F antibody

Cat. No. GTX48759

Host	Rabbit
Clonality	Polyclonal
Isotype	IgG
Applications	WB, Dot, ELISA
Reactivity	Mouse

Package

50 µg

Applications

Application Note

*Optimal dilutions/concentrations should be determined by the researcher.

Suggested dilution	Recommended dilution
WB	1:1000
Dot	Assay dependent
ELISA	1:10000

Not tested in other applications.

Calculated MW 18 kDa. ([Note](#))

Properties

Form	Liquid
Buffer	20mM Potassium Phosphate, 150mM NaCl
Preservative	No preservatives
Storage	Store as concentrated solution. Centrifuge briefly prior to opening vial. For short-term storage (1-2 weeks), store at 4°C. For long-term storage, aliquot and store at -20°C or below. Avoid multiple freeze-thaw cycles.
Concentration	1 mg/ml (Please refer to the vial label for the specific concentration.)
Immunogen	Full length recombinant mouse IL17-F protein.
Purification	Protein A purified
Conjugation	Unconjugated

Note

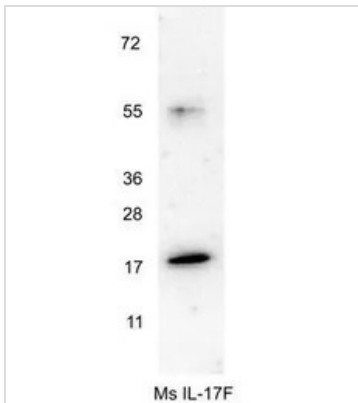
For laboratory research use only. Not for any clinical, therapeutic, or diagnostic use in humans or animals. Not for animal or human consumption.

Purchasers shall not, and agree not to enable third parties to, analyze, copy, reverse engineer or otherwise attempt to determine the structure or sequence of the product.



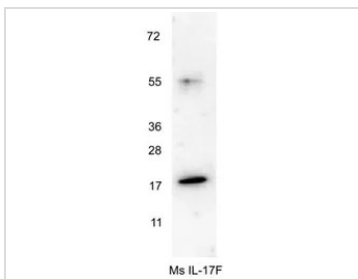
For full product information, images and publications, please visit our [website](#).

DATA IMAGES



GTx48759 WB Image

Western blot using GeneTex's anti-Mouse IL-17F antibody shows detection of a band ~18 kDa in size corresponding to recombinant mouse IL-17F. Recombinant mouse IL-17F was loaded on to an SDS-PAGE gel at 0.25 µg and after separation was transferred to nitrocellulose. The membrane was blocked with 1% BSA in TBST for 30 min at RT, followed by incubation with primary antibody diluted 1:1,000 in 1% BSA in TBST overnight at 4°C. After washes, the blot was reacted with secondary antibody HRP Goat anti-Rabbit IgG antibody diluted 1:40,000 in blocking buffer) for 30 min at RT followed by reaction with FemtoMax Chemiluminescent substrate. Data was collected using Bio-Rad VersaDocR 4000 MP imaging system.



GTx48759 WB Image

WB analysis of recombinant mouse IL17F protein using GTx48759 IL17F antibody.

Loading : 0.25 µg

Dilution : 1:1000



For full product information, images and publications, please visit our [website](https://www.genetex.com).