

## Esrp-1/2 antibody [23A7.C9]

Cat. No. GTX48760

Host	Mouse
Clonality	Monoclonal
Isotype	IgG1
Applications	WB, ELISA
Reactivity	Mouse

Package  
50 µg

## Applications

## Application Note

\*Optimal dilutions/concentrations should be determined by the researcher.

Suggested dilution	Recommended dilution
WB	1:1000
ELISA	1:750000

Not tested in other applications.

## Properties

Form	Liquid
Buffer	20mM Potassium Phosphate, 150mM NaCl
Preservative	0.01% Sodium azide
Storage	Store as concentrated solution. Centrifuge briefly prior to opening vial. For short-term storage (1-2 weeks), store at 4°C. For long-term storage, aliquot and store at -20°C or below. Avoid multiple freeze-thaw cycles.
Concentration	1 mg/ml (Please refer to the vial label for the specific concentration.)
Immunogen	Full length recombinant mouse Esrp-1 fusion protein.
Purification	Protein A purified From tissue culture supernatant
Conjugation	Unconjugated

## Note

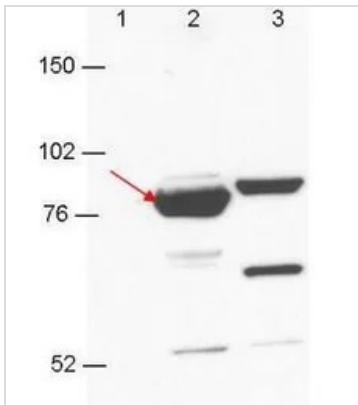
For laboratory research use only. Not for any clinical, therapeutic, or diagnostic use in humans or animals. Not for animal or human consumption.

Purchasers shall not, and agree not to enable third parties to, analyze, copy, reverse engineer or otherwise attempt to determine the structure or sequence of the product.



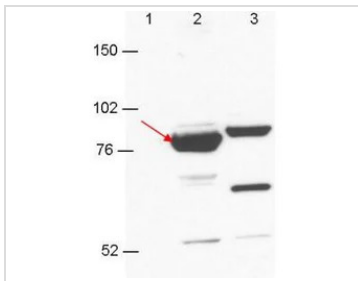
For full product information, images and publications, please visit our [website](#).

## DATA IMAGES



### GTx48760 WB Image

Anti-Esrp-1/2 antibody by western blot shows detection in 293T cell extracts. Lane 1: GFP-transfected. Lane 2: Esrp-1 transfected (arrow). Lane 3: Esrp-2 transfected. Each lane contains approximately 5 µg of lysate. Primary antibody was used at a 1:1000 dilution in PBS-T plus milk, and reacted for 1hr at room temperature. The membrane was washed and reacted with a 1:10,000 dilution of an anti-mouse secondary antibody for 1hr at room temperature. Molecular weight estimation was made by comparison to prestained MW markers.



### GTx48760 WB Image

WB analysis of transfected 293T whole cell lysate using GTx48760 Esrp-1/2 antibody [23A7.C9].

Lane 1 : GFP

Lane 2 : Esrp-1

Lane 3 : Esrp-2

Loading : 5 µg

Dilution : 1:1000



For full product information, images and publications, please visit our [website](https://www.genetex.com).