

ESRP1 antibody [27H12]

Cat. No. GTX48761

Host	Mouse
Clonality	Monoclonal
Isotype	IgG2b
Applications	WB, ELISA
Reactivity	Mouse

Package
50 µg

Applications

Application Note

*Optimal dilutions/concentrations should be determined by the researcher.

Suggested dilution	Recommended dilution
WB	1:1000
ELISA	1:750000

Not tested in other applications.

Calculated MW 76 kDa. ([Note](#))

Properties

Form	Liquid
Buffer	20mM Potassium Phosphate, 150mM NaCl
Preservative	0.01% Sodium azide
Storage	Store as concentrated solution. Centrifuge briefly prior to opening vial. For short-term storage (1-2 weeks), store at 4°C. For long-term storage, aliquot and store at -20°C or below. Avoid multiple freeze-thaw cycles.
Concentration	1 mg/ml (Please refer to the vial label for the specific concentration.)
Immunogen	Full length recombinant mouse Esrp-1 fusion protein.
Purification	Protein A purified
Conjugation	Unconjugated

Note

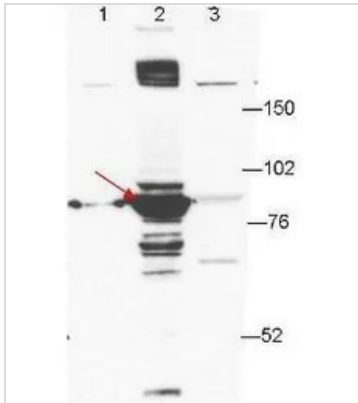
For laboratory research use only. Not for any clinical, therapeutic, or diagnostic use in humans or animals. Not for animal or human consumption.

Purchasers shall not, and agree not to enable third parties to, analyze, copy, reverse engineer or otherwise attempt to determine the structure or sequence of the product.



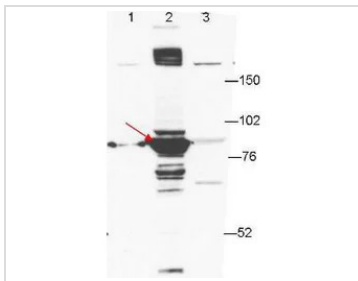
For full product information, images and publications, please visit our [website](#).

DATA IMAGES



GTx48761 WB Image

Anti-ESRP-1 by western blot shows detection of ESRP-1 in transfected 293T cell extracts (lane 2, arrowhead). Lanes 1 and 3 contain GFP-transfected- and ESRP2-transfected 293T cell lysates, respectively. Briefly, each lane contains approximately 5 µg lysate. Primary antibody was used at a 1:1000 dilution in PBST plus milk, and reacted for 1hr at room temperature. The membrane was washed and reacted with a 1:10,000 dilution of an anti-mouse secondary antibody for 1hr at room temperature. Molecular weight estimation was made by comparison to prestained MW markers.



GTx48761 WB Image

WB analysis of transfected 293T whole cell lysate using GTx48761 ESRP1 antibody [27H12].

Lane 1 : GFP

Lane 2 : ESRP1

Lane 3 : ESRP2

Loading : 5 µg

Dilution : 1:1000



For full product information, images and publications, please visit our [website](https://www.genetex.com).