

CXCL10 / IP10 antibody

Cat. No. GTX48762

Host	Rabbit
Clonality	Polyclonal
Isotype	IgG
Applications	WB, ELISA
Reactivity	Goat, Sheep, Bovine

Package

50 µg

Applications

Application Note

*Optimal dilutions/concentrations should be determined by the researcher.

Suggested dilution	Recommended dilution
WB	1 µg/mL
ELISA	1:500

Not tested in other applications.

Calculated MW 11 kDa. ([Note](#))

Properties

Form	Liquid
Buffer	20mM Potassium Phosphate, 150mM NaCl
Preservative	0.01% Sodium azide
Storage	Store as concentrated solution. Centrifuge briefly prior to opening vial. For short-term storage (1-2 weeks), store at 4°C. For long-term storage, aliquot and store at -20°C or below. Avoid multiple freeze-thaw cycles.
Concentration	1 mg/ml (Please refer to the vial label for the specific concentration.)
Immunogen	Recombinant protein raised in yeast, corresponding to the 83 amino acids of the mature bovine CXCL10 protein.
Purification	Protein A purified From serum
Conjugation	Unconjugated

Note

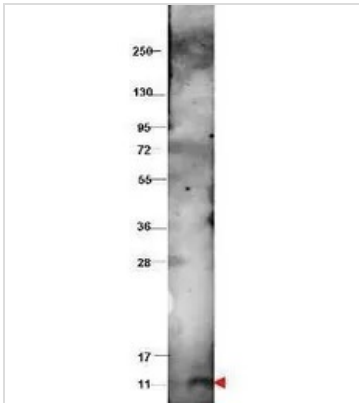
For laboratory research use only. Not for any clinical, therapeutic, or diagnostic use in humans or animals. Not for animal or human consumption.

Purchasers shall not, and agree not to enable third parties to, analyze, copy, reverse engineer or otherwise attempt to determine the structure or sequence of the product.



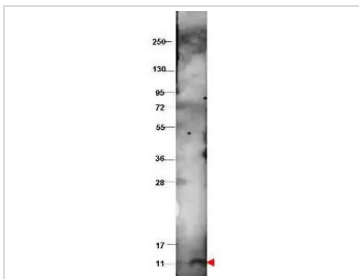
For full product information, images and publications, please visit our [website](#).

DATA IMAGES



GTX48762 WB Image

Western blot using GeneTex's protein-A purified anti-bovine CXCL10 antibody shows detection of recombinant bovine CXCL10 at 9.3 kDa (arrowhead) raised in yeast. The protein was purified and resolved by SDS-PAGE, then transferred to PVDF membrane. Membrane was blocked with 3% BSA, and probed with 1 µg/mL primary antibody overnight at 4°C. After washing, membrane was probed with IRDye800 Conjugated Goat Anti-Rabbit IgG for 45 min at room temperature.



GTX48762 WB Image

WB analysis of recombinant bovine CXCL10 protein using GTX48762 CXCL10 / IP10 antibody.
Dilution : 1 µg/mL



For full product information, images and publications, please visit our [website](https://www.genetex.com).