

AHA-1 antibody [25F2.D9]

Cat. No. GTX48775

Host	Rat
Clonality	Monoclonal
Isotype	IgG2a
Applications	WB, IHC-P, ELISA
Reactivity	Human

Package
50 µg

Applications

Application Note

*Optimal dilutions/concentrations should be determined by the researcher.

Suggested dilution	Recommended dilution
WB	1:1000
IHC-P	5-10 µg/mL
ELISA	1:20000

Not tested in other applications.

Calculated MW 38 kDa. ([Note](#))

Properties

Form	Liquid
Buffer	20mM Potassium Phosphate, 150mM NaCl
Preservative	No preservatives
Storage	Store as concentrated solution. Centrifuge briefly prior to opening vial. For short-term storage (1-2 weeks), store at 4°C. For long-term storage, aliquot and store at -20°C or below. Avoid multiple freeze-thaw cycles.
Concentration	1 mg/ml (Please refer to the vial label for the specific concentration.)
Immunogen	Full length recombinant mouse AHA1 protein followed by hybridoma development.
Purification	IgG fraction This product is an IgG fraction antibody purified from tissue culture supernatant by Protein-G chromatography, followed by extensive dialysis against the buffer stated above.
Conjugation	Unconjugated



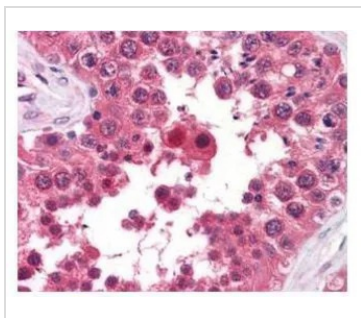
For full product information, images and publications, please visit our [website](#).

For laboratory research use only. Not for any clinical, therapeutic, or diagnostic use in humans or animals. Not for animal or human consumption.

Note

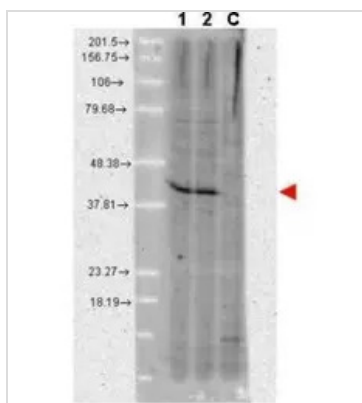
Purchasers shall not, and agree not to enable third parties to, analyze, copy, reverse engineer or otherwise attempt to determine the structure or sequence of the product.

DATA IMAGES



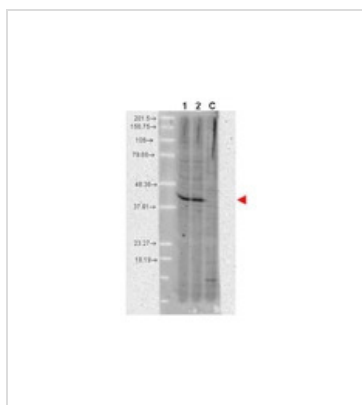
GTX48775 IHC-P Image

GeneTex's anti-AHA1 monoclonal antibody was used at a 5-10 µg/mL to detect AHA1 in the seminiferous tubule of human testis (40X) showing moderate staining. Leydig cells showed faint to moderate staining. Expression of AHA1 is reported in many epithelial and lymphatic tissues, with cytoplasmic localization. This antibody showed moderate cytoplasmic staining of a variety of epithelial tissues and lymphoid organs such as spleen and tonsil with minimal background staining. The image shows the localization of the antibody as the precipitated red signal, with a hematoxylin purple nuclear counterstain. Tissue was formalin-fixed and paraffin embedded.



GTX48775 WB Image

Western blot using GeneTex's anti-AHA1 monoclonal antibody shows detection of a band ~42 kDa in size corresponding to AHA1 in A431 whole cell lysate (lane 1) and MCF-7 whole cell lysate (lane 2). A control lane is shown where primary antibody was omitted from the incubation (lane C). Molecular weight markers are shown at the left. For best results, block the membrane overnight with 3% BSA in TBS followed by reaction with primary antibody diluted 1:1,000 and use HRP conjugated anti-Rabbit IgG secondary antibody diluted 1:20,000 in blocking buffer) for detection.



GTX48775 WB Image

WB analysis of various samples using GTX48775 AHA-1 antibody [25F2.D9].

Lane 1 : A431 whole cell lysate

Lane 2 : MCF-7 whole cell lysate

Lane C : Without primary antibody

Dilution : 1:1000



For full product information, images and publications, please visit our [website](https://www.genetex.com).