

Borrelia burgdorferi p35 antibody

Cat. No. GTX48805

Host	Rabbit
Clonality	Polyclonal
Isotype	IgG
Applications	WB, ELISA
Reactivity	Borrelia burgdorferi

Package
50 µg

Applications

Application Note

*Optimal dilutions/concentrations should be determined by the researcher.

Suggested dilution	Recommended dilution
WB	1:1000
ELISA	> 1:5000

Not tested in other applications.

Properties

Form	Liquid
Buffer	20mM Potassium Phosphate, 150mM NaCl
Preservative	0.01% Sodium azide
Storage	Store as concentrated solution. Centrifuge briefly prior to opening vial. For short-term storage (1-2 weeks), store at 4°C. For long-term storage, aliquot and store at -20°C or below. Avoid multiple freeze-thaw cycles.
Concentration	1 mg/ml (Please refer to the vial label for the specific concentration.)
Immunogen	MBP-fusion protein corresponding to Borrelia burgdorferi p35 protein.
Purification	Protein A purified From serum
Conjugation	Unconjugated

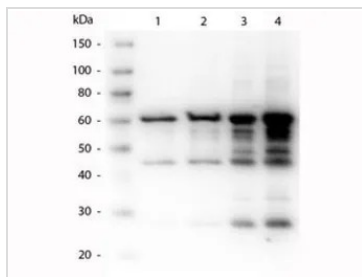
Note

For laboratory research use only. Not for any clinical, therapeutic, or diagnostic use in humans or animals. Not for animal or human consumption.

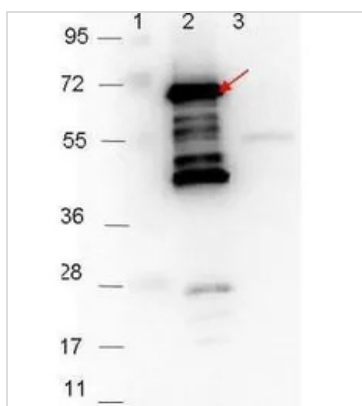
Purchasers shall not, and agree not to enable third parties to, analyze, copy, reverse engineer or otherwise attempt to determine the structure or sequence of the product.



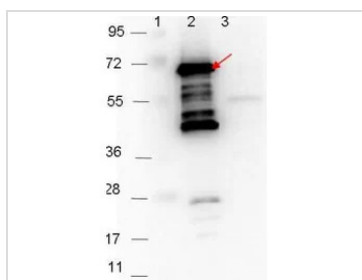
For full product information, images and publications, please visit our [website](#).

DATA IMAGES

GTx48805 WB Image

Western Blot of Rabbit anti-p35 antibody. Lane 1: p35 recombinant protein 50 ng load. Lane 2: p35 recombinant protein 100 ng load. Lane 3: p35 recombinant protein 250 ng load. Lane 4: p35 recombinant protein 500 ng load. Primary antibody: p35 antibody at 1:1,000 for overnight at 4°C. Secondary antibody: Peroxidase rabbit secondary antibody at 1:40,000 for 30 min at RT. Blocking for 30 min at RT. Predicted/Observed size: 60 kDa, 60 kDa for p35.


GTx48805 WB Image

Western blot showing detection of 0.1 µg of recombinant p35 protein. Lane 1: Molecular weight markers. Lane 2: MBP-p35 fusion protein (arrow; expected MW: 69.5 kDa). Lane 3: MBP alone. Protein was run on a 4-20% gel, then transferred to 0.45 µm nitrocellulose. After blocking with 1% BSA-TTBS overnight at 4°C, primary antibody was used at 1:1000 at room temperature for 30 min. HRP-conjugated Goat-Anti-Rabbit secondary antibody was used at 1:40,000 in blocking buffer and imaged on the VersaDoc MP 4000 imaging system (Bio-Rad).


GTx48805 WB Image

WB analysis of various samples using GTx48805 *Borrelia burgdorferi* p35 antibody.

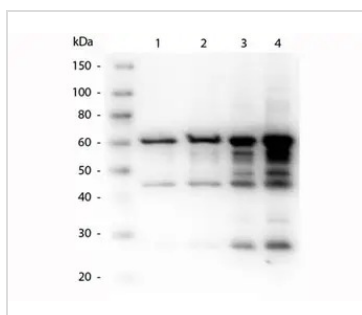
Lane 1 : Protein ladder

Lane 2 : MBP-p35 fusion protein

Lane 3 : MBP

Loading : 0.1 µg

Dilution : 1:1000


GTx48805 WB Image

WB analysis of recombinant *Borrelia burgdorferi* p35 protein using GTx48805 *Borrelia burgdorferi* p35 antibody.

Lane 1 : 50 ng

Lane 2 : 100 ng

Lane 3 : 250 ng

Lane 4 : 500 ng

Dilution : 1:1000



For full product information, images and publications, please visit our [website](https://www.genetex.com).