

# Borrelia burgdorferi Erpd/Arp37 antibody

**Cat. No. GTX48808**

<b>Host</b>	Rabbit
<b>Clonality</b>	Polyclonal
<b>Isotype</b>	IgG
<b>Applications</b>	WB, ELISA
<b>Reactivity</b>	Borrelia burgdorferi

**Package**  
50 µg

## Applications

### Application Note

\*Optimal dilutions/concentrations should be determined by the researcher.

Suggested dilution	Recommended dilution
WB	1:1000
ELISA	> 1:5000

Not tested in other applications.

## Properties

<b>Form</b>	Liquid
<b>Buffer</b>	20mM Potassium Phosphate, 150mM NaCl
<b>Preservative</b>	0.01% Sodium azide
<b>Storage</b>	Store as concentrated solution. Centrifuge briefly prior to opening vial. For short-term storage (1-2 weeks), store at 4°C. For long-term storage, aliquot and store at -20°C or below. Avoid multiple freeze-thaw cycles.
<b>Concentration</b>	1 mg/ml (Please refer to the vial label for the specific concentration.)
<b>Immunogen</b>	MBP-fusion protein corresponding to Borrelia burgdorferi ErpD/Arp37 protein.
<b>Purification</b>	Protein A purified From serum
<b>Conjugation</b>	Unconjugated

### Note

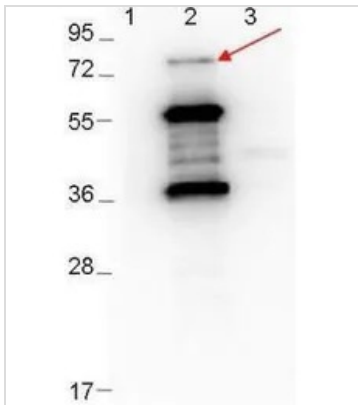
For laboratory research use only. Not for any clinical, therapeutic, or diagnostic use in humans or animals. Not for animal or human consumption.

Purchasers shall not, and agree not to enable third parties to, analyze, copy, reverse engineer or otherwise attempt to determine the structure or sequence of the product.



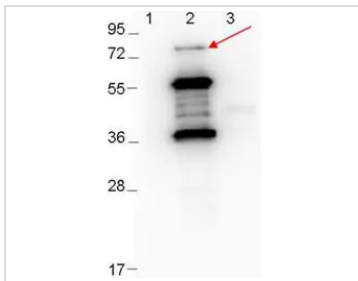
For full product information, images and publications, please visit our [website](#).

## DATA IMAGES



### GTX48808 WB Image

Western Blot showing detection of 0.1 µg recombinant proteins in western blot. Lane 1: Molecular weight markers. Lane 2: MBP-Erpd/Arp37 fusion proteins (arrow: expected MW of major band: 73.3 kDa). Lane 3: MBP alone. Protein was run on a 4-20% gel, then transferred to 0.45 µm nitrocellulose. After blocking with 1% BSA-TTBS overnight at 4°C, primary antibody was used at 1:1000 at room temperature for 30 min. HRP-conjugated Goat-Anti-Rabbit secondary antibody was used at 1:40,000 in blocking buffer and imaged on the VersaDoc MP 4000 imaging system (Bio-Rad).



### GTX48808 WB Image

WB analysis of various samples using GTX48808 *Borrelia burgdorferi* Erpd/Arp37 antibody.

Lane 1 : Protein ladder

Lane 2 : MBP-Erpd/Arp37 fusion protein

Lane 3 : MBP

Loading : 0.1 µg

Dilution : 1:1000



For full product information, images and publications, please visit our [website](https://www.genetex.com).