

# VEGFA antibody

**Cat. No. GTX48811**

<b>Host</b>	Rabbit
<b>Clonality</b>	Polyclonal
<b>Isotype</b>	IgG
<b>Applications</b>	WB, ELISA
<b>Reactivity</b>	Bovine

References ( 1 )

Package

50 µg

## Applications

### Application Note

\*Optimal dilutions/concentrations should be determined by the researcher.

Suggested dilution	Recommended dilution
WB	1:333
ELISA	Assay dependent

Not tested in other applications.

**Calculated MW** 22 kDa. ( [Note](#) )

## Properties

<b>Form</b>	Liquid
<b>Buffer</b>	20mM Potassium Phosphate, 150mM NaCl
<b>Preservative</b>	0.01% Sodium azide
<b>Storage</b>	Store as concentrated solution. Centrifuge briefly prior to opening vial. For short-term storage (1-2 weeks), store at 4°C. For long-term storage, aliquot and store at -20°C or below. Avoid multiple freeze-thaw cycles.
<b>Concentration</b>	1 mg/ml (Please refer to the vial label for the specific concentration.)
<b>Immunogen</b>	Recombinant protein raised in yeast, corresponding to the 164 amino acids of the mature bovine VEGF-A protein.
<b>Purification</b>	Protein A purified From serum
<b>Conjugation</b>	Unconjugated

### Note

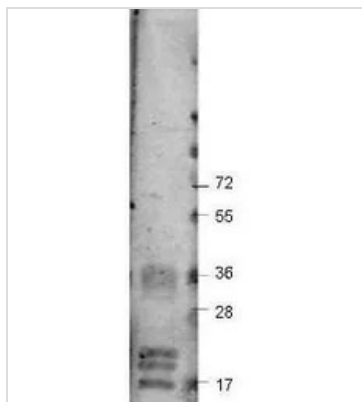
For laboratory research use only. Not for any clinical, therapeutic, or diagnostic use in humans or animals. Not for animal or human consumption.

Purchasers shall not, and agree not to enable third parties to, analyze, copy, reverse engineer or otherwise attempt to determine the structure or sequence of the product.



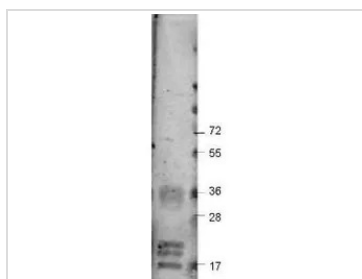
For full product information, images and publications, please visit our [website](#).

## DATA IMAGES



### GTx48811 WB Image

Western blot using GeneTex's Protein-A Purified anti-bovine VEGF antibody shows detection of recombinant bovine VEGF-A at 17-19.2 kDa. Approximately 2 µg of recombinant protein was loaded per lane onto a 4-20% gradient gel followed by transfer to PVDF membrane. The membrane was blocked using 3% BSA diluted 1:10. The primary antibody was used at a 1:333 dilution and was incubated with the blot for 2h at room temperature. The membrane was washed and reacted with a 1:10,000 dilution of IRDye800 Conjugated Affinity Purified Goat-anti-Rabbit IgG [H&L] MX10. Molecular weight estimation was made by comparison to prestained MW markers. Other detection systems will yield similar results.



### GTx48811 WB Image

WB analysis of recombinant bovine VEGFA protein using GTx48811 VEGFA antibody.

Loading : 2 µg

Dilution : 1:333



For full product information, images and publications, please visit our [website](#).